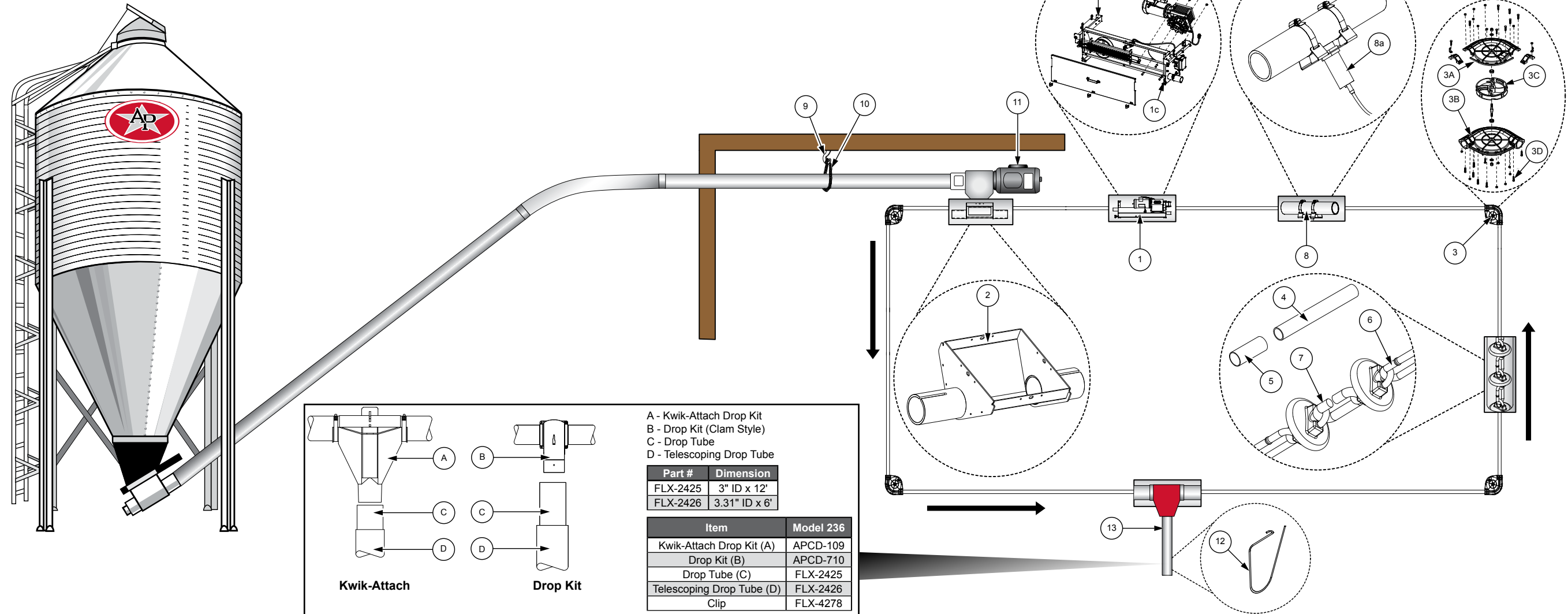


# Chain Disk System Diagram



Ref #	Part #	Description
1a	APCD-609	(Ref # 1) INCLUDES APCD-609 TROUGH ASSEMBLY, CHAIN DISK DRIVE UNIT
1	APCD-723	CD DRIVE UNIT AND CTRL 1PH, 50HZ, APCD-500
1b	APCD-608-150	GEARMOTOR, CHAIN DISK 1PH, 50HZ
1	APCD-724	CD DRIVE UNIT AND CTRL 1PH, 50HZ, APCD-500-S
1b	APCD-608-150	GEARMOTOR, CHAIN DISK 1PH, 50HZ
1	APCD-725	CD DRIVE UNIT AND CTRL 1PH, 50HZ, APCD-600
1b	APCD-608-150	GEARMOTOR, CHAIN DISK 1PH, 50HZ
1	APCD-726	CD DRIVE UNIT AND CTRL 1PH, 60HZ, APCD-500
1b	APCD-608-160	GEARMOTOR, CHAIN DISK 1PH, 60HZ
1	APCD-727	CD DRIVE UNIT AND CTRL 1PH, 60HZ, APCD-500-S
1b	APCD-608-160	GEARMOTOR, CHAIN DISK 1PH, 60HZ
1	APCD-728	CD DRIVE UNIT AND CTRL 1PH, 60HZ, APCD-600
1b	APCD-608-160	GEARMOTOR, CHAIN DISK 1PH, 60HZ
1	APCD-610-1XP	EXP.PRF CD DRIVE UNIT AND CTRL 1PH, 50/60HZ
1b	APCD-608-1XP	EXP.PRF GEARMOTOR, CHAIN DISK 1PH, 50/60HZ
1	APCD-610-160C	CD DRIVE UNIT COMPLETE W/CLEAR DOOR, 1PH, 50/60HZ
1	APCD-729	CD DRIVE UNIT AND CTRL 3PH, 50/60HZ, APCD-500
1b	APCD-608-350	GEARMOTOR, CHAIN DISK 3PH, 50/60HZ
N/S	FLX-4146	ONE CONTACTOR WATERTIGHT CNTRL, 220V
1	APCD-730	CD DRIVE UNIT AND CTRL 3PH, 50/60HZ, APCD-500-S
1b	APCD-608-350	GEARMOTOR, CHAIN DISK 3PH, 50/60HZ
1	APCD-731	CD DRIVE UNIT AND CTRL 3PH, 50/60HZ, APCD-600
1b	APCD-608-350	GEARMOTOR, CHAIN DISK 3PH, 50/60HZ
1	APCD-610-3XP	EXP.PRF CD DRIVE UNIT AND CTRL 3PH, 50/60HZ
1b	APCD-608-3XP	EXP.PRF GEARMOTOR, CHAIN DISK 3PH, 50/60HZ

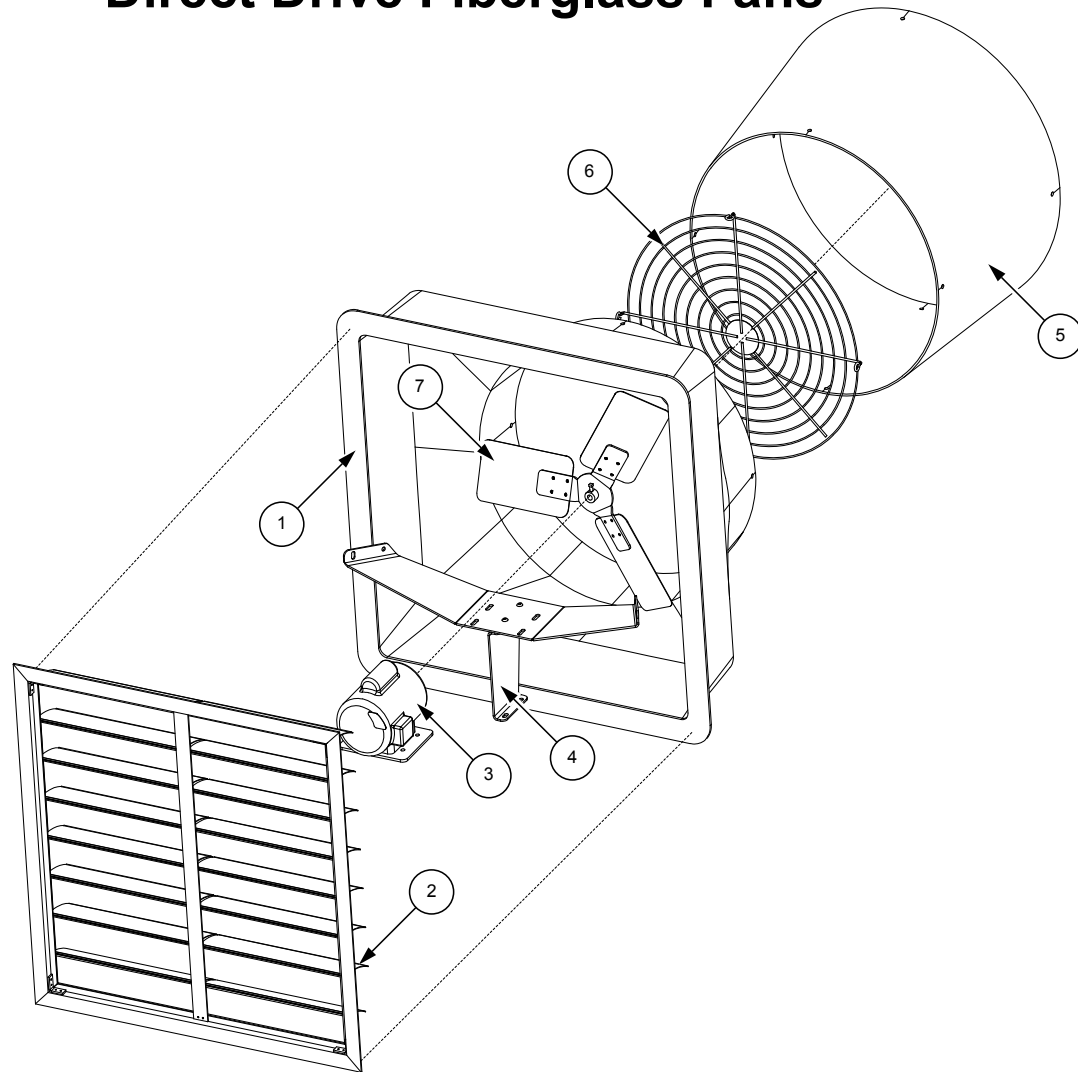
Ref #	Part #	Description
1	APCD-610-350C	CD DRIVE UNIT COMPLETE W/CLEAR DOOR, 3PH, 50/60HZ
1c	APCD-764	DOOR SWITCH KIT FOR CHAIN DISK DRIVE
2	APCD-620	FILL HOPPER ASSEMBLY
3	APCD-760	CLEAR CORNER ASSY WITH CAST WHEEL - SINGLE
3a	APCD-758	CHAIN DISK CORNER TOP, CLEAR
3b	APCD-759A	CHAIN DISK CORNER BOTTOM, CLEAR
3c	APCD-722	CORNER WHEEL ASSY W/DRIVE LUGS AND PADDLE
3d	APCD-015-SS	SS HDW PKG, CHAIN DISK CORNER
3	APCD-761	VERTICAL CHAIN DISK CORNER - CLEAR (SINGLE)
3a	APCD-758	CHAIN DISK CORNER TOP, CLEAR
3b	APCD-759A	CHAIN DISK CORNER BOTTOM, CLEAR
3c	APCD-702C	VERTICAL CORNER WHEEL ASSEMBLY WITH STEEL CAST WHEEL
3d	APCD-015-SS	SS HDW PKG, CHAIN DISK CORNER
3	APCD-716	VERTICAL CHAIN DISK CORNER - RED (SINGLE)
3a	APCD-000	CHAIN DISK CORNER TOP - RED NYLON
3b	APCD-001	CHAIN DISK CORNER BOTTOM - RED NYLON
3c	APCD-702C	VERTICAL CORNER WHEEL ASSEMBLY WITH STEEL CAST WHEEL
3d	APCD-015-SS	SS HDW PKG, CHAIN DISK CORNER
4	APCD-112	MODEL 236 WHITE PVC TUBE, 10' SECTIONS
4	APCD-217	TUBE, ELECTRIC WELD, ROUND, 2.375" OD, 18 GA, 10' LONG, G90 GALV
4	APCD-217-20	TUBE, ELECTRIC WELD, ROUND, 2.375" OD, 18 GA, 20' LONG, G90 GALV
4	APCD-217-21	TUBE, ELECTRIC WELD, ROUND, 2.375" OD, 18 GA, 21' LONG, G90 GALV

Ref #	Part #	Description
4	APCD-748-18	CD STEEL TUBING, 13 HOLES, 18" SPACING, SINGLE
4	APCD-748-18B	CD STEEL TUBING, 13 HOLES, 18" SPACING, BDL OF 10
4	APCD-748-19	CD STEEL TUBING, 13 HOLES, 19" SPACING, SINGLE
4	APCD-748-19B	CD STEEL TUBING, 13 HOLES, 19" SPACING, BDL OF 10
4	APCD-748-20	CD STEEL TUBING, 12 HOLES, 20" SPACING, SINGLE
4	APCD-748-20B	CD STEEL TUBING, 12 HOLES, 20" SPACING, BDL OF 10
4	APCD-748-22	CD STEEL TUBING, 11 HOLES, 22" SPACING, SINGLE
4	APCD-748-22B	CD STEEL TUBING, 11 HOLES, 22" SPACING, BDL OF 10
4	APCD-748-23	CD STEEL TUBING, 10 HOLES, 23" SPACING, SINGLE
4	APCD-748-23B	CD STEEL TUBING, 10 HOLES, 23" SPACING, BDL OF 10
4	APCD-748-24	CD STEEL TUBING, 10 HOLES, 24" SPACING, SINGLE
4	APCD-748-24B	CD STEEL TUBING, 10 HOLES, 24" SPACING, BDL OF 10
5	APCD-105	COUPLER, MODEL 236 CLEAR PVC
5	APCD-113	MODEL 236 WHITE PVC COUPLER
5	APCD-408	COUPLER, 2.375" GALVANIZED PIPE SLEEVE WITH HARDWARE
6	APCD-605-150	CHAIN, MODEL 236 CHAIN AND DISK, BAG OF 150'
6	APCD-605-100	CHAIN, MODEL 236 CHAIN AND DISK, BAG OF 100'
6	APCD-605-20	CHAIN, MODEL 236 CHAIN AND DISK, BAG OF 20'
6	APCD-605-50	CHAIN, MODEL 236 CHAIN AND DISK, BAG OF 50'
7	APCD-103	MODEL 236 CHAIN CONNECTING LINKS, BAG OF 12
8	APCD-294	TUBE MOUNTED PROXIMITY SWITCH LESS TIMER F/APCD-500 CONTROLS (U)
8a	FLX-4256	PROXIMITY SWITCH NO 20-250VAC
9	S-7313-B	BOLT EYE 1/4 X 3-1/2

Ref #	Part #	Description
9	S-10237-B	SCREW, EYE 1/4 X 3-1/2 SS
10	S-8589	#2 WELDLESS CHAIN, 400' ROLL
10	S-8589-SS	#2 WELDLESS CHAIN, 400' ROLL, SS
11	FLX-5307	220 V ELECTRIC BOX COMPLETE MODEL
11	FLX-2673	DDPU, 1/2 HP, 1 PH, 50/60HZ, 115/230V, 208/250 RPM
11	FLX-2674	DDPU, 3/4 HP, 1 PH, 50/60HZ, 115/230V, 208/250 RPM
11	FLX-3629	DDPU, 1 HP, 1 PH, 50/60 HZ, 110/220V, 208/250RPM
11	FLX-3637	DDPU, 1-1/2 HP, 1 PH, 50/60 HZ, 110/220V, 208/250RPM
11	FLX-5253-XP	EXP.PRF DDPU, 1-1/2 HP, E.P. 1PH, 50/60HZ, 1425/1725RPM
11	FLX-5258-XP	EXP.PRF DDPU, 1-1/2 HP, E.P. 3PH, 50/60HZ, 1425/1750RPM
12	FLX-4278	DROP TUBE SPRING CLIP MODEL 236
(Drop Tube - See Diagram Above)		
N/S	APCD-500	CONTROL SYSTEM, CHAIN DISK W/ DISPLAY, 24 HR, TIMER AND
N/S	APCD-500T	APCD-500 TOP BOARD (FITS APCD-295 AND APCD-500)
N/S	APCD-500B	APCD-500 BOTTOM BOARD (FITS APCD-295 AND APCD-500)
N/S	APCD-500-S	CONTROL SYSTEM, CHAIN DISK SLAVE UNIT, USED WITH
N/S	APCD-500T-S	APCD-500B-S TOP BOARD (FITS APCD-295-S AND APCD-500-S)
N/S	APCD-500B-S	APCD-500B-S BOTTOM BOARD (FITS APCD-295-S AND APCD-500-S)
N/S	APCD-600	CONTROL SYSTEM, CHAIN DISK W/ DISPLAY
N/S	APCD-600T	APCD-600 TOP BOARD (FITS APCD-300 AND APCD-600)
N/S	APCD-600B	APCD-600 BOTTOM BOARD (FITS APCD-300 AND APCD-600)



## Direct Drive Fiberglass Fans



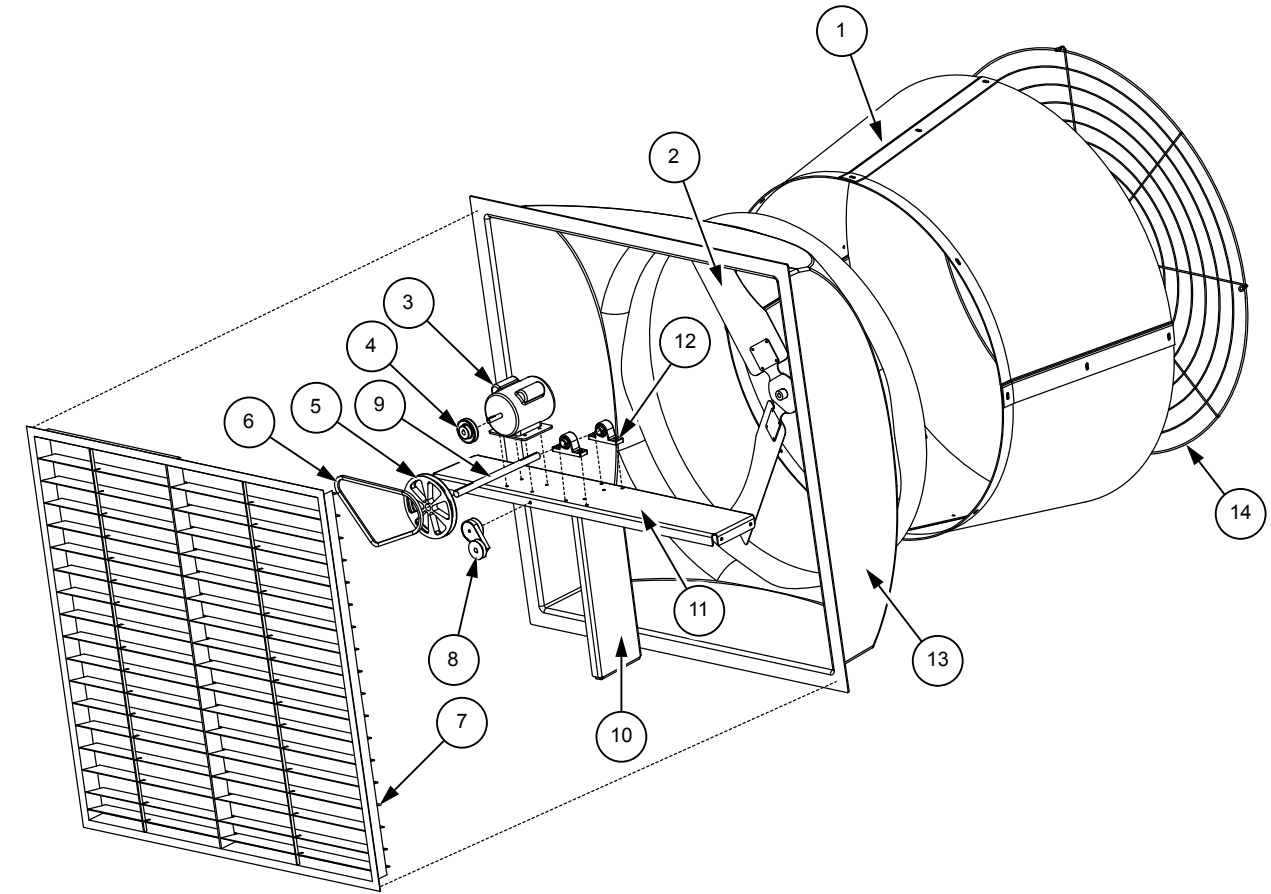
### Performer Direct Drive Fiberglass Fans

Ref #	Fan						Description
	APP12	APP14	APP18	APP24	APP36	CS24	
1	12-0117	12-0086F	12-0084F	12-0083F	12-0091	12-0083F	Housing
2	CPS-15SC	CPS-18C	CPS-24C1	CPS-32C	CPS-42C	CPS-32C	Shutter
3	15-0109	15-0109	15-0110	15-0105	15-0116	15-0083	Motor
4	11-0217	11-0524	11-0190	11-0181	11-0462	11-0181	Motor Mount
5	N/A	12-0087F	12-0085F	12-0080F	12-0093	12-0080F	Cone
6	11-0045-BLK	11-0200-BLK	11-0201-BLK	11-0202-BLK	11-0203-BLK	11-0203-BLK	Grill
7	13-0130	13-0106	13-0107	13-0209	13-0129	13-0147	Prop

### Glass-Pac Direct Drive Fiberglass Fans

Ref #	Fan						Description
	GP14	GP18	GP24	GP36	GPMA24	GPMA36	
1	N/A	N/A	N/A	N/A	N/A	N/A	Housing
2	CPS-15C	CPS-18C	CPS-24-GP24C	CPS-36C	CPS-34C	CPS-41C	Shutter
3	15-0042	15-0042	15-0083	15-0116	15-0041	15-0116	Motor
4	11-0067	11-0070	11-0404	11-0080	11-0016	N/A	Motor Mount
5	N/A	N/A	N/A	N/A	N/A	N/A	Cone
6	11-0029-BLK	11-0028-BLK	11-0021-BLK	N/A	N/A	N/A	Grill
7	13-0023	13-0110	13-0002	13-0001	13-0209	N/A	Prop

## Belt Drive Fiberglass Fans



### Belt Drive Fiberglass Fans

Ref #	Fan			Description
	APPB-36	APPB-50	CS54	
1	12-0093	12-0094	12-0259 (1 of 4 pcs)	Cone
2	13-0062	13-0044	13-0144-H	Prop
			13-0202 (6 Blade)	
3	15-0032 (1PH)	15-0029(1PH)	3017-3101(1PH)	Motor
	15-0086(3PH)	15-0084(3PH)	15-0200(3PH)	
4	16-0016	16-0016	16-0016	Driver Pulley
5	16-0014	16-0099	017-1422-9(6 Blade)	Driven Sheave
			16-0099	
6	16-0091	16-0012	16-0088	Belt
			16-0110(6 Blade)	
7	CPS-42C	CPS-54C	CPS-59C	Shutter
8	91-0057	91-0057	91-0057	Belt Tensioner
9	16-0083	16-0083	16-0005	Shaft
	16-0082(SS)	16-0082(SS)		
10	11-0463	11-0209	11-0359	Vertical Strut
11	11-0464	11-0208	11-0358	Bearing Plate
12	13-0226	13-0226	13-0226	Bearing
13	12-0091	12-0092	12-0258	Housing
14	11-0203-BLK	11-0325-BLK(W/CONE)	11-0255-BLK	Grill
		11-0204-BLK(NO CONE)	11-0470-BLK(NO CONE)	
N/S	10-0105	10-0105	10-0105	Shutter Hardware
N/S	N/A	10-0068	10-0100	Cone Hardware