



**PRODUCT  
CATALOG**

**VOLUME 4**

**HOG TESTED.  
FARMER APPROVED.**

[sdimfg.com](http://sdimfg.com)

1

**FEEDERS**  
PAGES 1-16



2

**WATERING SOLUTIONS**  
PAGE 17-22



3

**PIPE HANGERS**  
PAGES 23-24



4

**PIT FAN TRANSITIONS**  
PAGES 25-26



5

**CURTAIN ACCESSORIES**  
PAGES 27



6

**LATCHES & LOCKS**  
PAGE 28



7

**TRIM**  
PAGE 29-30



8

**DRAINS & WASTE WATER PRODUCTS**  
PAGES 31



9

**SCALE FRAMES**  
PAGE 32



10

**WIRE MESH**  
PAGE 33



11

**CHAINS**  
PAGE 34



12

**HARDWARE**  
PAGE 35 - 39



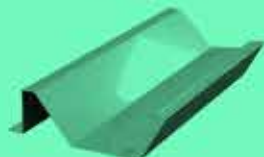
13

**FARROWING & GESTATION PENNING**  
PAGES 40-42



14

**TROUGH & FLAT STRAP**  
PAGES 43-44



15

**GATING**  
PAGES 45-46



16

**FEED SYSTEM COMPONENTS**  
PAGES 47





## DEALER LOCATOR

SDI's website features a dealer locator page where you can customize your search to find a local or international dealer.

[sdimfg.com/dealer-locator](http://sdimfg.com/dealer-locator)

For General Sales Inquiries: [sales@sdimfg.com](mailto:sales@sdimfg.com) OR (855) 306-6354



Dan  
855.306.6354



Tyler  
855.306.6354



Quinton  
855.306.6354



Michael  
605.999.4888

## ONSIGHT DELIVERY INFORMATION

Built Smart. Delivered Smart. We select the most economical delivery method with your company and customers' bottom line in mind. SDI experienced drivers can be available to deliver our quality products straight to the job site. Our easy-to-unload flat beds will save you valuable time for project completion. Call (855) 306-6354 for more onsite delivery information.



# DRY NURSERY FEEDER NM SERIES

## Features

- Option of EZ Adjustment, Hand Crank Adjustment or Shifter Adjustment system
- Traditional feed space dimensions designed for hog comfort and accessibility of feed
- *Feed Saving Lip* – saves feed and money

## Accessories

- Drop Tube Holders included

## Option

- Also available as knock down bolt kit (ideal for long distance and international shipments)
- Available in either single or double sided models



Dry Nursery Feeder | Traditional 6" x 6" Feed Spaces | Double Sided (20 GA 304SS, 31" Height)

Part # (EZ-Squeeze)	Part # (Hand Crank)	Part # (Shift Adjuster)	Trough Spaces	Length		Width		Height		Feed Capacity	
				Inches	CM	Inches	CM	Inches	CM	Pounds	Kg
NM18-203	NM18-203.HC	NM18-203.SA	Double 3	18.25"	46	17"	43	31"	79	91	41
NM24-204	NM24-204.HC	NM24-204.SA	Double 4	24.25"	62	17"	43	31"	79	121	55
NM30-205	NM30-205.HC	NM30-205.SA	Double 5	30.25"	77	17"	43	31"	79	151	68
NM36-206	NM36-206.HC	NM36-206.SA	Double 6	36.25"	92	17"	43	31"	79	181	82
NM42-207	NM42-207.HC	NM42-207.SA	Double 7	42.25"	107	17"	43	31"	79	212	96
NM48-208	NM48-208.HC	NM48-208.SA	Double 8	48.25"	122	17"	43	31"	79	242	110
NM54-209	NM54-209.HC	NM54-209.SA	Double 9	54.25"	138	17"	43	31"	79	272	123
NM60-210	NM60-210.HC	NM60-210.SA	Double 10	60.25"	153	17"	43	31"	79	302	137
NM66-211	NM66-211.HC	NM66-211.SA	Double 11	66.25"	168	17"	43	31"	79	333	151
NM72-212	NM72-212.HC	NM72-212.SA	Double 12	72.25"	184	17"	43	31"	79	363	165

\* Approximate Feed Capacity based on feed density of 42 lbs. per cubic foot | \*\* Custom Sizes Available

\*\*\*The shifter adjustment must be all the way down for flip to clean use.

# DRY NURSERY MAX FEEDER

## NMX SERIES

The Nursery MAX feeder (NMX Series) is constructed with 8" wide x 8" deep feed spaces and 18 ga walls. This "Junior" model is designed to accommodate the growing trend of keeping pigs in nursery to heavier weights.

### Features

- Option of EZ Adjustment, Hand Crank Adjustment or Shifter Adjustment system
- Larger feed space dimensions designed for hog comfort and accessibility of feed
- *Feed Saving Lip* – saves feed and money

### Accessories

- Drop tube holders included

### Options

- Available in either single or double sided models



Dry Nursery Max Feeder | Large 8" x 8" Feed Spaces | Double Sided (18 GA 304SS, 31" Height)

Part # (EZ-Squeeze)	Part # (Hand Crank)	Part # (Shift Adjuster)	Trough Spaces	Length		Width		Height		Feed Capacity	
				Inches	CM	Inches	CM	Inches	CM	Lbs	Kg
NMX24-203	NMX24-203.HC	NMX24-203.SA	Double 3	24.25"	62	22"	58	31"	79	161	73
NMX32-204	NMX32-204.HC	NMX32-204.SA	Double 4	32.25"	82	22"	58	31"	79	215	98
NMX40-205	NMX40-205.HC	NMX40-205.SA	Double 5	40.25"	102	22"	58	31"	79	268	122
NMX48-206	NMX48-206.HC	NMX48-206.SA	Double 6	48.25"	123	22"	58	31"	79	322	146
NMX56-207	NMX56-207.HC	NMX56-207.SA	Double 7	56.25"	143	22"	58	31"	79	376	171
NMX60-208	NMX60-208.HC	NMX60-208.SA	Double 8	60.25"	153	22"	58	31"	79	403	183
NMX64-208	NMX64-208.HC	NMX64-208.SA	Double 8	64.25"	163	22"	58	31"	79	430	195
NMX72-209	NMX72-209.HC	NMX72-209.SA	Double 9	72.25"	184	22"	58	31"	79	483	219
NMX80-210	NMX80-210.HC	NMX80-210.SA	Double 10	80.25"	214	22"	58	31"	79	537	244

\* Approximate Feed Capacity based on feed density of 42 lbs. per cubic foot | \*\* Custom Sizes Available

\*\*\*The shifter adjustment must be all the way down for flip to clean use.

# DRY FINISH FEEDER FM SERIES

## Features

- Option of EZ Adjustment, Hand Crank Adjustment or Shifter Adjustment system
- Traditional feed space dimensions of 10" width
- *Feed Saving Lip* – saves feed and money

## Accessories

- Drop tube holders included

## Options

- Available in either single or double sided models
- Available in bolt together model



Dry Finish Feeders, with Straight Rod Dividers | Traditional 10" Feed Space Width | Double Sided (18 GA 304SS, 34" Height)

Part # (EZ-Squeeze)	Part # (Hand Crank)	Part # (Shift Adjuster)	Trough Spaces	Length		Width		Height		Feed Capacity	
				Inches	CM	Inches	CM	Inches	CM	Lbs	Kg
<b>FM20-202</b>	<b>FM20-202.HC</b>	<b>FM20-202.SA</b>	Double 2	20.25"	51	25"	64	34"	86	185	84
<b>FM30-203</b>	<b>FM30-203.HC</b>	<b>FM30-203.SA</b>	Double 3	30.25"	77	25"	64	34"	86	277	126
<b>FM40-204</b>	<b>FM40-204.HC</b>	<b>FM40-204.SA</b>	Double 4	40.25"	102	25"	64	34"	86	370	168
<b>FM50-205</b>	<b>FM50-205.HC</b>	<b>FM50-205.SA</b>	Double 5	50.25"	128	25"	64	34"	86	462	210
<b>FM60-206</b>	<b>FM60-206.HC</b>	<b>FM60-206.SA</b>	Double 6	60.25"	153	25"	64	34"	86	554	251
<b>FM70-207</b>	<b>FM70-207.HC</b>	<b>FM70-207.SA</b>	Double 7	70.25"	178	25"	64	34"	86	647	293
<b>FM80-208</b>	<b>FM80-208.HC</b>	<b>FM80-208.SA</b>	Double 8	80.25"	204	25"	64	34"	86	739	335

\* Approximate Feed Capacity based on feed density of 42 lbs. per cubic foot | \*\* Custom Sizes Available



# DRY WEAN-TO-FINISH FEEDER WF SERIES

## Features

- Option of EZ Adjustment, Hand Crank Adjustment or Shifter Adjustment system
- Traditional wean-to-finish feed space dimensions (14" or more) – designed for hog comfort and accessibility of feed
- *Feed Saving Lip* – saves feed and money

## Accessories

- Drop tube holders included

## Options

- Available in either single or double sided models
- Also available as knock down bolt kit (ideal for long distance and international shipments)



## With Solid Panel Dividers

- Solid panel dividers prevent pigs from seeing each other, which reduces fighting and increases gains



## With V-Guard Dividers

- V-Guard dividers – can be easily washed with no splash back



## Dry Wean-to-Finish Feeder, with Solid Panel Dividers | Double Sided (18 GA 304SS, 34" Height)

Part # (EZ-Squeeze)	Part # (Hand Crank)	Part # (Shift Adjuster)	Trough Spaces	Length		Width		Height		Feed Capacity	
				Inches	CM	Inches	CM	Inches	CM	Lbs	Kg
WF14-221	WF14-221.HC	WF14-221.SA	Double 1	14.25"	36	25"	64	34"	86	129	59
WF28-222	WF28-222.HC	WF28-222.SA	Double 2	28.25"	72	25"	64	34"	86	259	117
WF30-222	WF30-222.HC	WF30-222.SA	Double 2	30.25"	77	25"	64	34"	86	277	126
WF42-223	WF42-223.HC	WF42-223.SA	Double 3	42.25"	107	25"	64	34"	86	388	176
WF50-224	WF50-224.HC	WF50-224.SA	Double 4	50.25"	128	25"	64	34"	86	462	210
WF56-224	WF56-224.HC	WF56-224.SA	Double 4	56.25"	143	25"	64	34"	86	517	235
WF60-224	WF60-224.HC	WF60-224.SA	Double 4	60.25"	153	25"	64	34"	86	554	251
WF70-225	WF70-225.HC	WF70-225.SA	Double 5	70.25"	178	25"	64	34"	86	647	293
WF75-226	WF75-226.HC	WF75-226.SA	Double 6	75.25"	191	25"	64	34"	86	693	314
WF84-226	WF84-226.HC	WF84-226.SA	Double 6	84.25"	214	25"	64	34"	86	776	352

## Dry Wean-to-Finish Feeder, with V-Guard Dividers | Double Sided (18 GA 304SS, 34" Height)

Part # (EZ-Squeeze)	Part # (Hand Crank)	Part # (Shift Adjuster)	Trough Spaces	Length		Width		Height		Feed Capacity	
				Inches	CM	Inches	CM	Inches	CM	Lbs	Kg
WF28-2V2	WF28-2V2.HC	WF28-2V2.SA	Double 2	28.25"	72	25"	64	34"	86	259	117
WF30-2V3	WF30-2V3.HC	WF30-2V3.SA	Double 3	30.25"	77	25"	64	34"	86	277	126
WF42-2V3	WF42-2V3.HC	WF42-2V3.SA	Double 3	42.25"	107	25"	64	34"	86	388	176
WF50-2V4	WF50-2V4.HC	WF50-2V4.SA	Double 4	50.25"	128	25"	64	34"	86	462	210
WF50-2V5	WF50-2V5.HC	WF50-2V5.SA	Double 5	50.25"	128	25"	64	34"	86	462	210
WF56-2V4	WF56-2V4.HC	WF56-2V4.SA	Double 4	56.25"	143	25"	64	34"	86	517	235
WF56-2V5	WF56-2V5.HC	WF56-2V5.SA	Double 5	56.25"	143	25"	64	34"	86	517	235
WF60-2V4	WF60-2V4.HC	WF60-2V4.SA	Double 4	60.25"	153	25"	64	34"	86	554	251
WF60-2V5	WF60-2V5.HC	WF60-2V5.SA	Double 5	60.25"	153	25"	64	34"	86	554	251
WF60-2V6	WF60-2V6.HC	WF60-2V6.SA	Double 6	60.25"	153	25"	64	34"	86	554	251
WF70-2V5	WF70-2V5.HC	WF70-2V5.SA	Double 5	70.25"	178	25"	64	34"	86	647	293
WF70-2V7	WF70-2V7.HC	WF70-2V7.SA	Double 7	70.25"	178	25"	64	34"	86	647	293
WF75-2V6	WF75-2V6.HC	WF75-2V6.SA	Double 6	75.25"	191	25"	64	34"	86	693	314

\* Approximate Feed Capacity based on feed density of 42 lbs. per cubic foot | \*\* Custom Sizes Available

\*\*\*The shifter adjustment must be all the way down for flip to clean use.

# DRY WEAN-TO-FINISH MAX FEEDER MAX SERIES

The Wean-to-Finish MAX feeder is 2" DEEPER in the trough feed spaces than the traditional Wean-to-Finish feeder, to give more head space to large finishing pigs. The MAX feeder is especially designed to provide adequate eating space for hogs being finished at 300+ lbs., a growing trend in the current market!

### Features

- Deep feed spaces - for hogs being finished at heavier weights
- Option of EZ Adjustment, Hand Crank Adjustment or Shifter Adjustment system
- Solid panel dividers or V-Guard dividers – either option available
- Traditional feed space dimensions (14" or more) – designed for hog comfort and accessibility of feed
- Feed saving lip – saves feed and money

### Accessories

- Drop tube holders included

### Options

- Available in either single or double sided models



With Solid Panel Dividers

With V-Guard Dividers

## Dry Wean-to-Finish MAX Feeder, with Solid Panel Dividers | Double Sided (18 GA 304SS, 34" Height)

Part # (EZ-Squeeze)	Part # (Hand Crank)	Part # (Shift Adjuster)	Trough Spaces	Length		Width		Height		Feed Capacity	
				Inches	CM	Inches	CM	Inches	CM	Lbs	Kg
<b>MX14-221</b>	<b>MX14-221.HC</b>	<b>MX14-221.SA</b>	Double 1	14.25"	36	30"	76	34"	86	129	59
<b>MX28-222</b>	<b>MX28-222.HC</b>	<b>MX28-222.SA</b>	Double 2	28.25"	72	30"	76	34"	86	259	117
<b>MX30-222</b>	<b>MX30-222.HC</b>	<b>MX30-222.SA</b>	Double 2	30.25"	77	30"	76	34"	86	277	126
<b>MX42-223</b>	<b>MX42-223.HC</b>	<b>MX42-223.SA</b>	Double 3	42.25"	107	30"	76	34"	86	388	176
<b>MX50-224</b>	<b>MX50-224.HC</b>	<b>MX50-224.SA</b>	Double 4	50.25"	128	30"	76	34"	86	462	210
<b>MX56-224</b>	<b>MX56-224.HC</b>	<b>MX56-224.SA</b>	Double 4	56.25"	143	30"	76	34"	86	517	235
<b>MX60-224</b>	<b>MX60-224.HC</b>	<b>MX60-224.SA</b>	Double 4	60.25"	153	30"	76	34"	86	554	251
<b>MX70-225</b>	<b>MX70-225.HC</b>	<b>MX70-225.SA</b>	Double 5	70.25"	178	30"	76	34"	86	647	293
<b>MX75-226</b>	<b>MX75-226.HC</b>	<b>MX75-226.SA</b>	Double 6	75.25"	191	30"	76	34"	86	693	314
<b>MX84-226</b>	<b>MX84-226.HC</b>	<b>MX84-226.SA</b>	Double 6	84.25"	214	30"	76	34"	86	776	352
<b>MX90-226</b>	<b>MX90-226.HC</b>	<b>MX90-226.SA</b>	Double 6	90.25"	229	30"	76	34"	86	832	377

## Dry Wean-to-Finish MAX Feeder, with V-Guard Dividers | Double Sided (18 GA 304SS, 34" Height)

Part # (EZ-Squeeze)	Part # (Hand Crank)	Part # (Shift Adjuster)	Trough Spaces	Length		Width		Height		Feed Capacity	
				Inches	CM	Inches	CM	Inches	CM	Lbs	Kg
<b>MX28-2V2</b>	<b>MX28-2V2.HC</b>	<b>MX28-2V2.SA</b>	Double 2	28.25"	72	30"	76	34"	86	259	117
<b>MX30-2V2</b>	<b>MX30-2V2.HC</b>	<b>MX30-2V2.SA</b>	Double 2	30.25"	77	30"	76	34"	86	277	126
<b>MX42-2V3</b>	<b>MX42-2V3.HC</b>	<b>MX42-2V3.SA</b>	Double 3	42.25"	107	30"	76	34"	86	388	176
<b>MX50-2V4</b>	<b>MX50-2V4.HC</b>	<b>MX50-2V4.SA</b>	Double 4	50.25"	128	30"	76	34"	86	462	210
<b>MX56-2V4</b>	<b>MX56-2V4.HC</b>	<b>MX56-2V4.SA</b>	Double 4	56.25"	143	30"	76	34"	86	517	235
<b>MX60-2V4</b>	<b>MX60-2V4.HC</b>	<b>MX60-2V4.SA</b>	Double 4	60.25"	153	30"	76	34"	86	554	251
<b>MX70-2V5</b>	<b>MX70-2V5.HC</b>	<b>MX70-2V5.SA</b>	Double 5	70.25"	178	30"	76	34"	86	647	293
<b>MX75-2V6</b>	<b>MX75-2V6.HC</b>	<b>MX75-2V6.SA</b>	Double 6	75.25"	191	30"	76	34"	86	693	314
<b>MX84-2V6</b>	<b>MX84-2V6.HC</b>	<b>MX84-2V6.SA</b>	Double 6	84.25"	214	30"	76	34"	86	776	352
<b>MX90-2V6</b>	<b>MX90-2V6.HC</b>	<b>MX90-2V6.SA</b>	Double 6	90.25"	229	30"	76	34"	86	832	377

\* Approximate Feed Capacity based on feed density of 42 lbs. per cubic foot | \*\* Custom Sizes Available

\*\*\*The shifter adjustment must be all the way down for flip to clean use.



# DRY WEAN-TO-FINISH TALL MAX FEEDER MXT SERIES

In addition to having the DEEP feed trough spaces of the Wean-to-Finish MAX feeder, the Tall MAX Feeder (MXT Series) is 40" tall and has greater feed capacity.

## Features

- Deep feed spaces & 40" height
- Option of EZ Adjustment or Hand Crank Adjustment system
- Larger feed space dimensions (14" or more) – designed for hog comfort and accessibility of feed
- *Feed saving lip* – saves feed and money

## Accessories

- Drop tube holders included

## Options

- Available in either single or double sided models



Dry Wean-to-Finish TALL MAX Feeder, with Solid Panel Dividers | Double Sided (18 GA 304SS, 40" Height)

Part # (EZ-Squeeze)	Part # (Hand Crank)	Trough Spaces	Length		Width		Height		Feed Capacity	
			Inches	CM	Inches	CM	Inches	CM	Lbs	Kg
MXT14-221	MXT14-221.HC	Double 1	14.25"	36	30"	76	40"	102	182	83
MXT28-222	MXT28-222.HC	Double 2	28.25"	72	30"	76	40"	102	365	166
MXT30-222	MXT30-222.HC	Double 2	30.25"	77	30"	76	40"	102	390	177
MXT42-223	MXT42-223.HC	Double 3	42.25"	107	30"	76	40"	102	547	248
MXT50-224	MXT50-224.HC	Double 4	50.25"	128	30"	76	40"	102	651	295
MXT56-224	MXT56-224.HC	Double 4	56.25"	143	30"	76	40"	102	729	331
MXT60-224	MXT60-224.HC	Double 4	60.25"	153	30"	76	40"	102	781	354
MXT70-225	MXT70-225.HC	Double 5	70.25"	178	30"	76	40"	102	911	413
MXT75-226	MXT75-226.HC	Double 6	75.25"	191	30"	76	40"	102	977	443
MXT84-226	MXT84-226.HC	Double 6	84.25"	214	30"	76	40"	102	1094	496
MXT90-226	MXT90-226.HC	Double 6	90.25"	229	30"	76	40"	102	1172	532

Dry Wean-to-Finish TALL MAX Feeder, with V-Guard Dividers | Double Sided (18 GA 304SS, 40" Height)

Part # (EZ-Squeeze)	Part # (Hand Crank)	Trough Spaces	Length		Width		Height		Feed Capacity	
			Inches	CM	Inches	CM	Inches	CM	Lbs	Kg
MXT28-2V2	MXT28-2V2.HC	Double 2	28.25"	72	30"	76	40"	102	365	166
MXT30-2V2	MXT30-2V2.HC	Double 2	30.25"	77	30"	76	40"	102	390	177
MXT42-2V3	MXT42-2V3.HC	Double 3	42.25"	107	30"	76	40"	102	547	248
MXT50-2V4	MXT50-2V4.HC	Double 4	50.25"	128	30"	76	40"	102	651	295
MXT56-2V4	MXT56-2V4.HC	Double 4	56.25"	143	30"	76	40"	102	729	331
MXT60-2V4	MXT60-2V4.HC	Double 4	60.25"	153	30"	76	40"	102	781	354
MXT70-2V5	MXT70-2V5.HC	Double 5	70.25"	178	30"	76	40"	102	911	413
MXT75-2V6	MXT75-2V6.HC	Double 6	75.25"	191	30"	76	40"	102	977	443
MXT84-2V6	MXT84-2V6.HC	Double 6	84.25"	214	30"	76	40"	102	1094	496
MXT90-2V6	MXT90-2V6.HC	Double 6	90.25"	229	30"	76	40"	102	1172	532

\* Approximate Feed Capacity based on feed density of 42 lbs. per cubic foot | \*\* Custom Sizes Available

# DRY BOAR FEEDER Designed to feed larger hogs - Boars, Gilts, & Sows!

## BF SERIES

### Features

- Heavy duty 16 gauge construction - for use with larger hogs
- Deep feed spaces & 40" height
- Solid panel dividers prevent pigs from seeing each other, reducing fighting and increases gains
- Option of EZ Adjustment or Hand Crank Adjustment system
- Larger feed space dimensions – designed for hog comfort and accessibility of feed
- *Feed saving lip* – saves feed and money

### Accessories

- Drop tube holders included

### Options

- Available in either single or double sided models



### Dry Boar Feeder | Single Sided (16 GA 304SS, 40" Height)

Part # (EZ-Squeeze)	Part # (Hand Crank)	Trough Spaces	Length		Width		Height		Feed Capacity	
			Inches	CM	Inches	CM	Inches	CM	Pounds	Kg
<b>BF12-121</b>	<b>BF12-121.HC</b>	Single 1	12.25"	31	18"	46	40"	102	111	50
<b>BF14-121</b>	<b>BF14-121.HC</b>	Single 1	14.25"	36	18"	46	40"	102	129	59
<b>BF16-121</b>	<b>BF16-121.HC</b>	Single 1	16.25"	41	18"	46	40"	102	148	67
<b>BF18-121</b>	<b>BF18-121.HC</b>	Single 1	18.25"	46	18"	46	40"	102	166	75
<b>BF30-122</b>	<b>BF30-122.HC</b>	Single 2	30.25"	77	18"	46	40"	102	277	126
<b>BF32-122</b>	<b>BF32-122.HC</b>	Single 2	32.25"	82	18"	46	40"	102	296	134
<b>BF48-123</b>	<b>BF48-123.HC</b>	Single 3	48.25"	123	18"	46	40"	102	444	201
<b>BF60-124</b>	<b>BF60-124.HC</b>	Single 4	60.25"	153	18"	46	40"	102	554	251

### Dry Boar Feeder | Double Sided (16 GA 304SS, 40" Height)

<b>BF12-221</b>	<b>BF12-221.HC</b>	Double 1	12.25"	31	30"	76	40"	102	156	71
<b>BF14-221</b>	<b>BF14-221.HC</b>	Double 1	14.25"	36	30"	76	40"	102	182	83
<b>BF16-221</b>	<b>BF16-221.HC</b>	Double 1	16.25"	41	30"	76	40"	102	208	94
<b>BF18-221</b>	<b>BF18-221.HC</b>	Double 1	18.25"	46	30"	76	40"	102	234	106
<b>BF30-222</b>	<b>BF30-222.HC</b>	Double 2	30.25"	77	30"	76	40"	102	390	177
<b>BF32-222</b>	<b>BF32-222.HC</b>	Double 2	32.25"	82	30"	76	40"	102	417	189
<b>BF48-223</b>	<b>BF48-223.HC</b>	Double 3	48.25"	123	30"	76	40"	102	625	284
<b>BF60-224</b>	<b>BF60-224.HC</b>	Double 4	60.25"	153	30"	76	40"	102	781	354

\* Approximate Feed Capacity based on feed density of 42 lbs. per cubic foot | \*\* Custom Sizes Available

# WET/DRY NURSERY SHELF FEEDER

## CSN SERIES

### Features

- Option of EZ Adjustment or Hand Crank Adjustment system
- Rugged SDI nipples
- Direct drill-threaded water line: eliminates chance of leaks around the nipple
- Proper feed space dimensions designed for hog comfort and accessibility of feed
- *Feed saving lip* – saves feed and money

### Accessories

- Drop tube holders included

### Options

- Available in either single or double sided models
- Also available as knock down bolt kit (Ideal for long distance and international shipments)



Wet/Dry Nursery Shelf Feeder | (18 GA 304SS, 28" Height)

Part # (EZ-Squeeze)	Part # (Hand Crank)	Trough Spaces	Length		Width		Height		Feed Capacity	
			Inches	CM	Inches	CM	Inches	CM	Lbs	Kg
<b>CSN18-202</b>	<b>CSN18-202.HC</b>	Double 2	18.25"	39	18.25"	46	28"	71	77	35
<b>CSN24-203</b>	<b>CSN24-203.HC</b>	Double 3	24.25"	72	18.25"	46	28"	71	102	46
<b>CSN30-203</b>	<b>CSN30-203.HC</b>	Double 3	30.25"	77	18.25"	46	28"	71	127	58
<b>CSN36-204</b>	<b>CSN36-204.HC</b>	Double 4	36.25"	92	18.25"	46	28"	71	152	69
<b>CSN42-205</b>	<b>CSN42-205.HC</b>	Double 5	42.25"	107	18.25"	46	28"	71	177	80
<b>CSN48-206</b>	<b>CSN48-206.HC</b>	Double 6	48.25"	123	18.25"	46	28"	71	203	92
<b>CSN54-206</b>	<b>CSN54-206.HC</b>	Double 6	54.25"	123	18.25"	46	28"	71	228	103
<b>CSN60-207</b>	<b>CSN60-207.HC</b>	Double 7	60.25"	153	18.25"	46	28"	71	253	115

\* Approximate Feed Capacity based on feed density of 42 lbs. per cubic foot | \*\* Custom Sizes Available



# WET/DRY WEAN-TO-FINISH SHELF FEEDER

## CSW SERIES

Wet/Dry Wean-to-Finish Shelf Feeder | (16 GA 304SS, Standard 31" Height)

### Features

- Option of EZ Adjustment or Hand Crank Adjustment system
- Rugged SDI nipples
- Direct drill-threaded water line: eliminates chance of leaks around the nipple
- Large feed space dimensions (14" or more) – designed for hog comfort and accessibility of feed
- *Feed saving lip* – saves feed and money

### Accessories

- Drop tube holders included

### Options

- Available in either single or double sided models
- This feeder is available in two sizes - standard 31" height or XT 40" height
- Also available as knock down bolt kit (ideal for long distance and international shipments)



Part # (EZ-Squeeze)	Part # (Hand Crank)	Trough Spaces	Length		Width		Height		Feed Capacity	
			Inches	CM	Inches	CM	Inches	CM	Lbs	Kg
<b>CSW15-201</b>	<b>CSW15-201.HC</b>	Double 1	15.25"	39	22"	56	31"	79	82	37
<b>CSW28-202</b>	<b>CSW28-202.HC</b>	Double 2	28.25"	72	22"	56	31"	79	153	69
<b>CSW30-202</b>	<b>CSW30-202.HC</b>	Double 2	30.25"	77	22"	56	31"	79	164	74
<b>CSW36-203</b>	<b>CSW36-203.HC</b>	Double 3	36.25"	92	22"	56	31"	79	197	89
<b>CSW42-203</b>	<b>CSW42-203.HC</b>	Double 3	42.25"	107	22"	56	31"	79	229	104
<b>CSW48-203</b>	<b>CSW48-203.HC</b>	Double 3	48.25"	123	22"	56	31"	79	262	119
<b>CSW56-204</b>	<b>CSW56-204.HC</b>	Double 4	60.25"	143	22"	56	31"	79	306	139
<b>CSW60-204</b>	<b>CSW60-204.HC</b>	Double 4	60.25"	153	22"	56	31"	79	328	149
<b>CSW72-205</b>	<b>CSW72-205.HC</b>	Double 5	72.25"	184	22"	56	31"	79	393	178
<b>CSW84-206</b>	<b>CSW84-206.HC</b>	Double 6	84.25"	214	22"	56	31"	79	459	208

Wet/Dry Wean-to-Finish Shelf Feeder | (16 GA 304SS, Extra Tall 40" Height)

<b>CSW15XT-201</b>	<b>CSW15XT-201.HC</b>	Double 1	15.25"	39	22"	56	40"	102	158	72
<b>CSW28XT-202</b>	<b>CSW28XT-202.HC</b>	Double 2	28.25"	72	22"	56	40"	102	294	133
<b>CSW30XT-202</b>	<b>CSW30XT-202.HC</b>	Double 2	30.25"	77	22"	56	40"	102	315	143
<b>CSW36XT-203</b>	<b>CSW36XT-203.HC</b>	Double 3	36.25"	92	22"	56	40"	102	378	171
<b>CSW42XT-203</b>	<b>CSW42XT-203.HC</b>	Double 3	42.25"	107	22"	56	40"	102	441	200
<b>CSW48XT-203</b>	<b>CSW48XT-203.HC</b>	Double 3	48.25"	123	22"	56	40"	102	504	229
<b>CSW56XT-204</b>	<b>CSW56XT-204.HC</b>	Double 4	56.25"	143	22"	56	40"	102	588	267
<b>CSW60XT-204</b>	<b>CSW60XT-204.HC</b>	Double 4	60.25"	153	22"	56	40"	102	630	286
<b>CSW72XT-205</b>	<b>CSW72XT-205.HC</b>	Double 5	72.25"	184	22"	56	40"	102	756	343
<b>CSW84XT-206</b>	<b>CSW84XT-206.HC</b>	Double 6	84.25"	214	22"	56	40"	102	882	400

\* Approximate Feed Capacity based on feed density of 42 lbs. per cubic foot | \*\* Custom Sizes Available

# WET/DRY SHUT OFF FEEDER

## OPTIONAL ON CSW SERIES

SDI's new one-handed feed shut-off system. Allows for the operator to independently shut off feed to one side of the feed shelf while still allowing the other side to operate.

This option is available in two sizes - standard 31" height or XT 40" height.



Wet/Dry Shut Off Shelf Feeder | (16 GA 304SS, Standard 31" Height)

Part # (EZ-Squeeze)	Part # (Hand Crank)	Trough Spaces	Length		Width		Height		Feed Capacity	
			Inches	CM	Inches	CM	Inches	CM	Lbs	Kg
<b>CSW30-202.S0</b>	<b>CSW30-202.S0.HC</b>	Double 2	30.25"	77	22"	56	31"	79	164	74
<b>CSW36-203.S0</b>	<b>CSW36-203.S0.HC</b>	Double 3	36.25"	92	22"	56	31"	79	197	89
<b>CSW42-203.S0</b>	<b>CSW42-203.S0.HC</b>	Double 3	42.25"	107	22"	56	31"	79	229	104
<b>CSW48-203.S0</b>	<b>CSW48-203.S0.HC</b>	Double 3	48.25"	123	22"	56	31"	79	262	119
<b>CSW56-204.S0</b>	<b>CSW56-204.S0.HC</b>	Double 4	60.25"	143	22"	56	31"	79	306	139
<b>CSW60-204.S0</b>	<b>CSW60-204.S0.HC</b>	Double 4	60.25"	153	22"	56	31"	79	328	149
<b>CSW72-205.S0</b>	<b>CSW72-205.S0.HC</b>	Double 5	72.25"	184	22"	56	31"	79	393	178


Wet/Dry Shut Off Shelf Feeder | (16 GA 304SS, Extra Tall 40" Height)

<b>CSW30XT-202.S0</b>	<b>CSW30XT-202.S0.HC</b>	Double 2	30.25"	77	22"	56	40"	102	315	143
<b>CSW36XT-203.S0</b>	<b>CSW36XT-203.S0.HC</b>	Double 3	36.25"	92	22"	56	40"	102	378	171
<b>CSW42XT-203.S0</b>	<b>CSW42XT-203.S0.HC</b>	Double 3	42.25"	107	22"	56	40"	102	441	200
<b>CSW48XT-203.S0</b>	<b>CSW48XT-203.S0.HC</b>	Double 3	48.25"	123	22"	56	40"	102	504	229
<b>CSW56XT-204.S0</b>	<b>CSW56XT-204.S0.HC</b>	Double 4	56.25"	143	22"	56	40"	102	588	267
<b>CSW60XT-204.S0</b>	<b>CSW60XT-204.S0.HC</b>	Double 4	60.25"	153	22"	56	40"	102	630	286
<b>CSW72XT-205.S0</b>	<b>CSW72XT-205.S0.HC</b>	Double 5	72.25"	184	22"	56	40"	102	756	343

\* Approximate Feed Capacity based on feed density of 42 lbs. per cubic foot | \*\* Custom Sizes Available

# WET/DRY WEAN-TO-FINISH DROP SHELF FEEDER

## CSD SERIES



**FULLY ADJUSTABLE**  
Adjust shelf 3 positions as your pigs grow

Features a "drop shelf" with 3 position options - 6.5", 8", or 9.5" shelf height (when open). This feeder has the ability to adjust the feed shelf low for the small wean pigs and raise the shelf as they mature. These positions are easily set by hand with the adjustment mechanism. **NO TOOLS NEEDED!**

### Features

- Drop shelf - shelf height drops several inches lower to give weaned piglets ready access to feed. Shelf level can be raised as pigs grow!
- *Feed saving lip* – saves feed and money
- Rugged SDI nipples

### Options

- Available as knock down bolt kit (ideal for long distance and international shipments)
- Available in either single or double sided models
- This feeder is available in two sizes - 34" height or XT 40" height.



### Wet/Dry Wean-to-Finish Drop Shelf Feeder | (16 GA 304SS, Regular 34" Height)

Part # (EZ-Squeeze)	Part # (Hand Crank)	Trough Spaces	Length		Width		Height		Feed Capacity	
			Inches	CM	Inches	CM	Inches	CM	Pounds	Kg
<b>CSD15-201</b>	<b>CSD15-201.HC</b>	Double 1	15.25"	39	22"	56	34"	86	106	48
<b>CSD28-202</b>	<b>CSD28-202.HC</b>	Double 2	28.25"	72	22"	56	34"	86	198	89
<b>CSD30-202</b>	<b>CSD30-202.HC</b>	Double 2	30.25"	77	22"	56	34"	86	212	96
<b>CSD36-203</b>	<b>CSD36-203.HC</b>	Double 3	36.25"	92	22"	56	34"	86	255	115
<b>CSD42-203</b>	<b>CSD42-203.HC</b>	Double 3	42.25"	107	22"	56	34"	86	296	135
<b>CSD48-203</b>	<b>CSD48-203.HC</b>	Double 3	48.25"	123	22"	56	34"	86	339	154
<b>CSD56-204</b>	<b>CSD56-204.HC</b>	Double 4	56.25"	143	22"	56	34"	86	396	180
<b>CSD60-204</b>	<b>CSD60-204.HC</b>	Double 4	60.25"	153	22"	56	34"	86	424	193
<b>CSD72-205</b>	<b>CSD72-205.HC</b>	Double 5	72.25"	184	22"	56	34"	86	508	231

### Wet/Dry Wean-to-Finish Drop Shelf Feeder | (16 GA 304SS, Extra Tall 40" Height)

<b>CSD15XT-201</b>	<b>CSD15XT-201.HC</b>	Double 1	15.25"	39	22"	56	40"	102	158	72
<b>CSD28XT-202</b>	<b>CSD28XT-202.HC</b>	Double 2	28.25"	72	22"	56	40"	102	294	133
<b>CSD30XT-202</b>	<b>CSD30XT-202.HC</b>	Double 2	30.25"	77	22"	56	40"	102	315	143
<b>CSD36XT-203</b>	<b>CSD36XT-203.HC</b>	Double 3	36.25"	92	22"	56	40"	102	378	171
<b>CSD42XT-203</b>	<b>CSD42XT-203.HC</b>	Double 3	42.25"	107	22"	56	40"	102	441	200
<b>CSD48XT-203</b>	<b>CSD48XT-203.HC</b>	Double 3	48.25"	123	22"	56	40"	102	504	229
<b>CSD56XT-204</b>	<b>CSD56XT-204.HC</b>	Double 4	56.25"	143	22"	56	40"	102	588	267
<b>CSD60XT-204</b>	<b>CSD60XT-204.HC</b>	Double 4	60.25"	153	22"	56	40"	102	630	286
<b>CSD72XT-205</b>	<b>CSD72XT-205.HC</b>	Double 5	72.25"	184	22"	56	40"	102	756	343

\* Approximate Feed Capacity based on feed density of 42 lbs. per cubic foot | \*\* Custom Sizes Available



# WET/DRY FINISH SHELF FEEDER

## CSF SERIES

### Features

- Option of EZ Adjustment or Hand Crank Adjustment system
- Rugged SDI nipples
- Direct drill-threaded water line: eliminates chance of leaks around the nipple
- Larger feeder space dimensions (14" or more) – designed for hog comfort and accessibility of feed
- *Feed saving lip* – saves feed and money

### Accessories

- Drop tube holders included

### Options

- Available in either single or double sided models
- This feeder is available in two sizes - standard 31" height or XT 40" height
- Also available as knock down bolt kit (ideal for long distance and international shipments)



### Wet/Dry Finish Shelf Feeder | (16 GA 304SS, 31" Standard Height)

Part # (EZ-Squeeze)	Part # (Hand Crank)	Trough Spaces	Length		Width		Height		Feed Capacity	
			Inches	CM	Inches	CM	Inches	CM	Lbs	Kg
<b>CSF15-201</b>	<b>CSF15-201.HC</b>	Double 1	15.25"	39	22"	56	31"	79	82	37
<b>CSF28-202</b>	<b>CSF28-202.HC</b>	Double 2	28.25"	72	22"	56	31"	79	153	69
<b>CSF30-202</b>	<b>CSF30-202.HC</b>	Double 2	30.25"	77	22"	56	31"	79	164	74
<b>CSF36-203</b>	<b>CSF36-203.HC</b>	Double 3	36.25"	92	22"	56	31"	79	197	89
<b>CSF42-203</b>	<b>CSF42-203.HC</b>	Double 3	42.25"	107	22"	56	31"	79	229	104
<b>CSF48-203</b>	<b>CSF48-203.HC</b>	Double 3	48.25"	123	22"	56	31"	79	262	119
<b>CSF56-204</b>	<b>CSF56-204.HC</b>	Double 4	60.25"	143	22"	56	31"	79	306	139
<b>CSF60-204</b>	<b>CSF60-204.HC</b>	Double 4	60.25"	153	22"	56	31"	79	328	149
<b>CSF72-205</b>	<b>CSF72-205.HC</b>	Double 5	72.25"	184	22"	56	31"	79	393	178
<b>CSF84-206</b>	<b>CSF84-206.HC</b>	Double 6	84.25"	214	22"	56	31"	79	459	208

### Wet/Dry Finish Shelf Feeder | (16 GA 304SS, 40" Extra Tall Height)

<b>CSF15XT-201</b>	<b>CSF15XT-201.HC</b>	Double 1	15.25"	39	22"	56	40"	102	158	72
<b>CSF28XT-202</b>	<b>CSF28XT-202.HC</b>	Double 2	28.25"	72	22"	56	40"	102	294	133
<b>CSF30XT-202</b>	<b>CSF30XT-202.HC</b>	Double 2	30.25"	77	22"	56	40"	102	315	143
<b>CSF36XT-203</b>	<b>CSF36XT-203.HC</b>	Double 3	36.25"	92	22"	56	40"	102	378	171
<b>CSF42XT-203</b>	<b>CSF42XT-203.HC</b>	Double 3	42.25"	107	22"	56	40"	102	441	200
<b>CSF48XT-203</b>	<b>CSF48XT-203.HC</b>	Double 3	48.25"	123	22"	56	40"	102	504	229
<b>CSF56XT-204</b>	<b>CSF56XT-204.HC</b>	Double 4	56.25"	143	22"	56	40"	102	588	267
<b>CSF60XT-204</b>	<b>CSF60XT-204.HC</b>	Double 4	60.25"	153	22"	56	40"	102	630	286
<b>CSF72XT-205</b>	<b>CSF72XT-205.HC</b>	Double 5	72.25"	184	22"	56	40"	102	756	343
<b>CSF84XT-206</b>	<b>CSF84XT-206.HC</b>	Double 6	84.25"	214	22"	56	40"	102	882	400

\* Approximate Feed Capacity based on feed density of 42 lbs. per cubic foot | \*\* Custom Sizes Available

# WET/DRY SELECT PADDLE FEEDER

## SP SERIES

### Features

- EZ Squeeze Adjustment
- Rugged SDI nipples
- Direct drill-threaded water line: eliminates chance of leaks around the nipple
- Large feed space dimensions (14" or more) – designed for hog comfort and accessibility of feed
- *Feed saving lip* – saves feed and money
- This feeder comes in 36" height

### Accessories

- Drop tube holders included



Wet/Dry Wean-to-Finish Paddle Feeder | ( 16 GA 304SS, 36" Height)

Part # (EZ-Squeeze)	Trough Spaces	Length		Width		Height		Feed Capacity	
		Inches	CM	Inches	CM	Inches	CM	Pounds	Kg
<b>SP28-202</b>	Double 2	28.25"	72	22"	56	36	91	188	85
<b>SP30-202</b>	Double 2	30.25"	77	22"	56	36	91	202	92
<b>SP42-203</b>	Double 3	42.25"	107	22"	56	36	91	282	128
<b>SP48-203</b>	Double 3	48.25"	123	22"	56	36	91	323	147
<b>SP56-204</b>	Double 4	56.25"	143	22"	56	36	91	376	171
<b>SP58-204</b>	Double 4	58.25"	148	22"	56	36	91	390	177
<b>SP60-204</b>	Double 4	60.25"	153	22"	56	36	91	403	183
<b>SP70-205</b>	Double 5	70.25"	178	22"	56	36	91	470	213
<b>SP77-205*</b> Single Flanged Divider	Double 5	77.25"	196	22"	56	36	91	517	235
<b>SP84-206</b>	Double 6	84.25"	214	22"	56	36	91	564	256
<b>SP92-206*</b> Single Flanged Divider	Double 6	92.25"	234	22"	56	36	91	618	280

\* Approximate Feed Capacity based on feed density of 42 lbs. per cubic foot | \*\* Custom Sizes Available

# FEEDER ACCESSORIES

## Parts for Wet/Dry Feeders



**EZ-150**  
"EZ-SQUEEZE" Adjustment panel  
For all wet/dry feeders, double sided



**CS1839**  
Raised feed tube holder - with clips & hardware  
For traditional 31" height wet/dry shelf CSF & CSW feeders



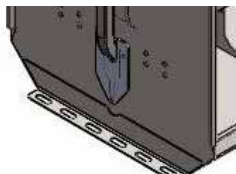
**CS1840**  
Raised feed tube holder - with clips & hardware  
For XT 40" height wet/dry shelf CSF & CSW feeders



**CS1839.1**  
60° Side clip for tube holder with hardware,  
for CS1839



**CS1840.1**  
90° Side clip for tube holder with hardware,  
for CS1840



**CS-000-020**  
Weld on base angle, for wet/dry CSF & CSW feeders

**CS-000-021**  
Weld on base angle with 1" lift off the floor, for  
wet/dry CSF & CSW feeders



**PP-00003**  
Crank Adjust



**EZ-SP-1**  
EZ-Squeeze adjustment  
spring  
C0480-063-0750-S

## Parts for Dry Feeders



**EZ-100**  
"EZ-SQUEEZE" adjustment panel  
For NM dry feeders, double sided



**EZ-101**  
"EZ-SQUEEZE" Adjustment panel  
For all large dry feeders, double sided



**SA-002**  
SDI shifter adjustment



**WF1839**  
Flat feed tube holder - with clips & hardware  
For dry FM, WF, MX, MXT, & BF feeders



**WF1840**  
Raised feed tube holder - with clips & hardware  
For dry FM, WF, MX, MXT, & BF feeders



**WF-000-040**  
90° Side clip for tube holder with hardware,  
for WF1839 or WF1840



**NM-000-007**  
Adjustment rod/strap – creased  
For NM dry feeders



**NMX-000-007**  
Adjustment rod/strap - creased  
For NMX dry feeders



**WF-000-023**  
Adjustment rod/strap – creased  
For WF, FM, & MX dry feeders



**WF-000-006**  
Panel divider  
For WF dry feeders



**WF-000-024**  
2" Channel brackets for WF feeders (set of 2)

**WF-000-012**  
4" Channel brackets for WF feeders (set of 2)

**WF-000-026**  
6.5" Channel brackets for WF feeders (set of 2)



**WF-200-020**  
Base mount angle, weld on  
For dry FM, WF, MX, MXT, or BF feeders



# SOW FEEDERS

## SF SERIES



### SF-015

#### Put your scoop and feed cart away! There is a better solution!

Provides better feed consistency, while still keeping the lactation feed intake high. Low-cost, low-maintenance - Saves your staff time and labor that can be used to save more pigs! Feed waste and spoilage eliminated! Use SDI's sow feeder with a feed tube that is easily adjusted and set.

- Heavy Duty 16 GA, 304 stainless steel
- Sloped Bottom - Keep more feed assessable to the sow
- Available in 14" and 16" widths
- Available in left or right hand
- Two adjustment options available



Hand crank with indicator



EZ Squeeze adjustment

Adapter kit to retro existing sow feeders with ad lib adjustable feed tube assembly. This weld on kit includes adjustment, 2 straps, PVC tube and feed shelf.

- SF-015I-ADAPTERKIT** - Hand crank adjustment with indicator
- SF-015EZ-ADAPTERKIT** - EZ Squeeze adjustment

### Options

- Sow feeders available in over 50 standard models
- Custom designs available
- These feeders can be adapted to fit almost any crate or head gate

### Model Number

The "14" or "16" at the end of the part number indicates 14" or 16" feeder width



**SF-0SM.14**  
Sow feed bowl, small



**SF-010.14**  
Sow feed bowl, XL



**SF-014.16**  
Sow feeder, with feed hopper & spring loaded shutter



**SF-017.14**  
Sow feeder, with rolled edges

# SOW FEEDERS



**SF-018.14**  
Sow feeder, compatible with INTAK feed system



**SFD001**  
Sow feed dispenser



**SF-039.14 - SF-039.16**  
Sow feeder, compatible with SFD001



**SF-043.14**  
Wet/dry Sow feeder, with feed hopper & shelf



**SF-046.16**  
Sow bowl, large



**SF-047.14R - SF-047.14L**  
Wet/dry sow feeder, with feed hopper & shelf ("R" or "L" - waterline on right or left side)



**SF-025W**  
Wet/dry sow feeder, with adjustable feed shelf

## Feeder Accessories



**SF-HOPPER**  
For use with SF-015 feeder  
Fits inside 3" PVC tube



**SFD-HOPPER**  
For use with SFD0001 feeder

# WATERING SOLUTIONS

## Nipple Bars



SDI's Nipple Bar is the practical solution for successfully weaning young piglets onto wet/dry feeders. The Nipple Bars are fitted with quick-attach clamps for securing to gating. After the pigs are started on wet/dry feed, the bars can be easily removed.

Available in different sizes - 2 to 12 nipples per side on one side (single) or both (double).

### Features

- Option of Edstrom or SDI nipples
- Quick-attach mounting clamps: works on 5/8" – 3/4" bar
- Top clip made to fit standard 1.5" x 1.5" gate top angle



### Double Sided Nipple Bars

#### SDI Nipples

#### Edstrom Nipples

Model Number	Model Number
<b>NIPPLEBAR-DBLE2</b> (2 Nipples per side)	<b>NIPPLEBAR-DBLE2.E</b> (2 Nipples per side)
<b>NIPPLEBAR-DBLE3</b> (3 Nipples per side)	<b>NIPPLEBAR-DBLE3.E</b> (3 Nipples per side)
<b>NIPPLEBAR-DBLE4</b> (4 Nipples per side)	<b>NIPPLEBAR-DBLE4.E</b> (4 Nipples per side)
<b>NIPPLEBAR-DBLE5</b> (5 Nipples per side)	<b>NIPPLEBAR-DBLE5.E</b> (5 Nipples per side)
<b>NIPPLEBAR-DBLE6</b> (6 Nipples per side)	<b>NIPPLEBAR-DBLE6.E</b> (6 Nipples per side)
<b>NIPPLEBAR-DBLE8</b> (8 Nipples per side)	<b>NIPPLEBAR-DBLE8.E</b> (8 Nipples per side)
<b>NIPPLEBAR-DBLE10</b> (10 Nipples per side)	<b>NIPPLEBAR-DBLE10.E</b> (10 Nipples per side)
<b>NIPPLEBAR-DBLE12</b> (12 Nipples per side)	<b>NIPPLEBAR-DBLE12.E</b> (12 Nipples per side)

(Single side bars available with nipples on only one side)



# NIPPLE BAR ACCESSORIES



**WC-001**  
Quick attach clamp for nipple bars



**WC-012**  
1.5" x 1.5" top angle gate clip for nipple bars

## NippleBar Hangers



Part # **NIPPLEBAR - HANGERS**  
Ceiling-mount hangers (Set of 3)  
(To hang bar when not in use)

# FLIP DRINKERS

This unique and durable waterer has an easy to clean flip feature that saves time and can be mounted on the wall or back to back on gating.

## Vacuum Valve Model

- Hardware Included
- Vacuum Valve sold separately
- Optional clamps for round tube gating - 7/8", 1.5", 1"



**WC-100-14W**  
Wall mount single



**WC-100-14GS**  
Gate mount single



**WC-100-14GD**  
Gate mount back to back - Set of 2



**WC-105-14W**  
Wall mount single



**WC-105-14GS**  
Gate mount single



**WC-105-14GD**  
Gate mount back to back - Set of 2



**CO600-063-1000-S**  
Replacement spring for flip drinker and nipple bar clamp

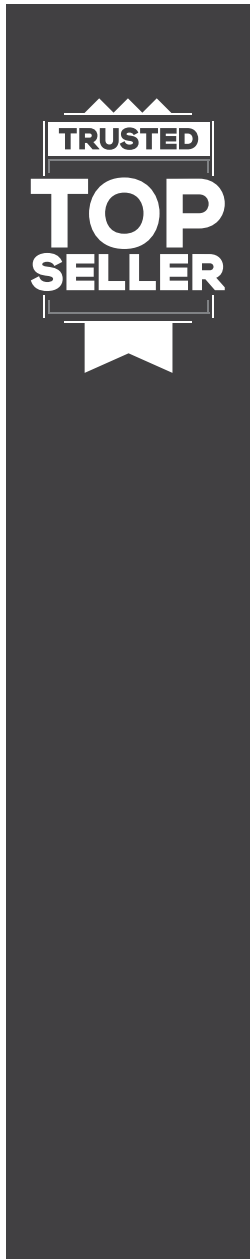
## Nipple Model

- Hardware Included
- Same easy to clean flip feature but with nipples. (Nipples Included)
- Optional clamps for round tube gating - 7/8", 1.5", 1"

# WATER CUP - NIPPLE DRINKERS

(Nipples Included)

- For nursery and wean-to-finish applications
- Water supply by nipple
- 60" Lead line
- Single 8" x 9" cup (one nipple) or double 8" x 14" Cup (two nipples)



## Double Cup Nipple Drinker

### WC-002

Double nipple water cup with drip T-fitting

### WC-002S

Double nipple water cup with straight fitting

### WC-002N

Water cup without nipples

### WC-002SN

Water cup without nipples with straight fitting

### Installation Kits

### WC-002-DMH

Gate mounting installation hardware kit for 2 back-to-back

### WC-002-SMH

Gate mounting installation hardware kit for 1 to gate



## Single Cup Nipple Drinker

### WC-003

Single nipple water cup with drip T-fitting

### WC-003S

Single nipple water cup with straight fitting

### WC-003N

Water cup without nipple

### WC-003SN

Water cup without nipple with straight fitting

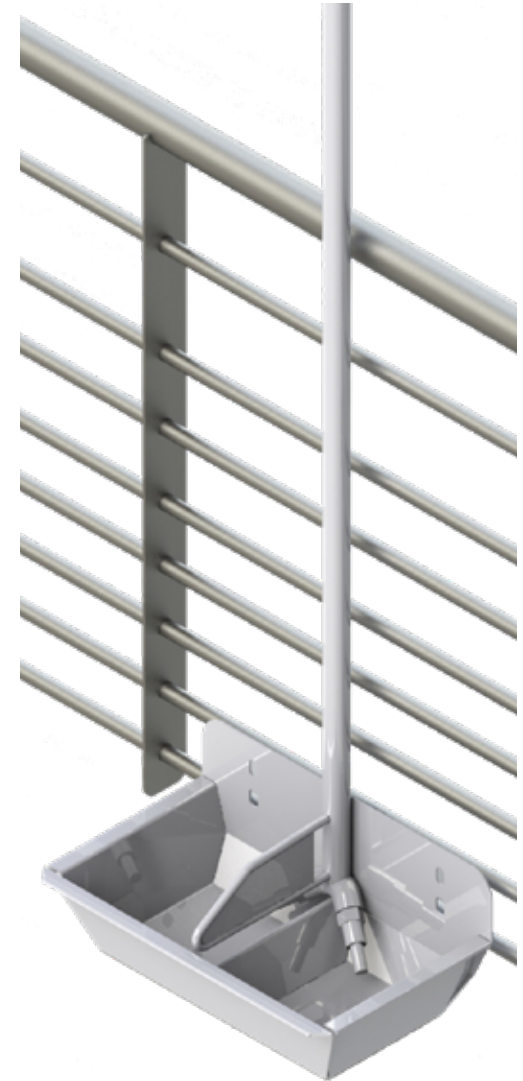
### Installation Kits

### WC-003-DMH

Gate mounting installation hardware kit for 2 back-to-back

### WC-003-SMH

Gate mounting installation hardware kit for 1 to gate



## Swing Water Pipe

(Pipe only, nipples sold separately)

### WL18-H01

18" Swinging water  
Double/"Y" type, 304SS  
Pipe only - nipples sold separately

### WL24-H01

24" Swinging water  
Double/"Y" type, 304SS  
Pipe only - nipples sold separately

### WL30-H01

30" Swinging water  
Double/"Y" type, 304SS  
Pipe only - nipples sold separately

### WL36-H01

36" Swinging water  
Double/"Y" type, 304SS  
Pipe only - nipples sold separately

## Gate Mounting "Bucket Waterers"

(Vacuum valve sold separately)

- Mount on gate between bars
- Available in 6", 12", 18", & 24" lengths
- Water supply by vacuum valve



**WC6-004** – 6" Bucket water

**WC12-004** – 12" Bucket water

**WC18-004** – 18" Bucket water

**WC24-004** – 24" Bucket water

## Inline Water Trough

- Stainless steel fence bolts to penning
- Includes vacuum valve

**TF12-700** – 12" Water trough

**TF18-700** – 18" Water trough

**TF24-700** – 24" Water trough



## Double Nipple Inline Water Trough

- Stainless steel fence bolts to penning
- 1/2" male thread on top of each pipe

**WT-00011** – 24" Water trough



## Gestation Drinker Pipes

(Nipples sold separately)

**WLGEST18-1**

18" Single waterer

**WLGEST24-1**

24" Single waterer

**WLGEST30-1**

30" Single waterer

**WLGEST36-1**

36" Single waterer

**WLGEST18-2**

18" Double waterer

**WLGEST24-2**

24" Double waterer

**WLGEST30-2**

30" Double waterer

**WLGEST36-2**

36" Double waterer



**PGW-SNG-1**

Gilt drinker pipe - single

**PGW-DBL-1**

Gilt drinker pipe - double

**PGW-SNG-2**

Sow drinker pipe - single

**PGW-DBL-2**

Sow drinker pipe - double



## Farrow Drinker Pipes

Sow/piglet combo drinker pipe (Nipples sold separately)

**WL-R00**

Sow/piglet combo, right hand

**WL-L00**

Sow/piglet combo, left hand

**WL-R01**

Sow/piglet combo, right hand-angled sow nipple

**WL-L01**

Sow/piglet combo, left hand-angled sow nipple



## Farrowing Waterpans



**WC-006.NPL4** (with NPL4 SDI Nipple)

**WC-006.NPL5** (with NPL5 button Nipple)

Farrowing water pan, with 90° elbow, nipple, & 48" lead line



**WC-006FC.NPL4** (with NPL4 SDI Nipple)

**WC-006FC.NPL5** (with NPL5 button Nipple)

Farrowing water pan, with full coupler & nipple, no lead line



**WC-007.NPL4** (with NPL4 SDI Nipple)


**WC-007.NPL5** (with NPL5 button Nipple)

Farrowing water pan, with 90° elbow & nipple, no lead line




# NIPPLES & VALVES


**SDI**




**NPL1**  
SDI Piglet nipple



**NPL4**  
SDI Wet feeding nipple



**NPL5**  
Button nipple



**EDSTROM**



**FD05**  
Edstrom piglet nipple




**FD06**  
Edstrom wet feeding nipple




**NPL-H**  
Edstrom hog nipple



**ROTECNA**



**VRH-3 VALVE**  
Rotecna vacuum valve



**VRH-3 BLADDER**  
For Rotecna vacuum valve  
\*\*Clear inside bladder only\*\*

**SIKA**

**PP-00001**  
SIKA adjustable flow wet feeding nipple



# PIPES & FITTINGS

**1/2-STREET ELBOW**



**COUPLER, .50" FF**  
1/2" Full coupler female X female



**1/2-ELBOW**



**COUPLER, .50" MF**  
1/2" Coupler/adaptor male X female



**1/2-T**



**44-100748**  
1/2" Close pipe nipple



## Pipe Nipples

Male x Male thread:  
1/2" schedule 10



- WL6-S11 – 6"
- WL12-S11 – 12"
- WL18-S11 – 18"
- WL24-S11 – 24"
- WL30-S11 – 30"
- WL36-S11 – 36"
- WL40-S11 – 40"
- WL48-S11 – 48"
- WL60-S11 – 60"

## Pipe Couplers

Female x Female thread:  
1/2" schedule 10



- WL12-S00 – 12"
- WL18-S00 – 18"
- WL24-S00 – 24"
- WL30-S00 – 30"
- WL36-S00 – 36"
- WL40-S00 – 40"
- WL48-S00 – 48"
- WL60-S00 – 60"

## Pipe Fittings

Female x Male thread:  
1/2" schedule 10



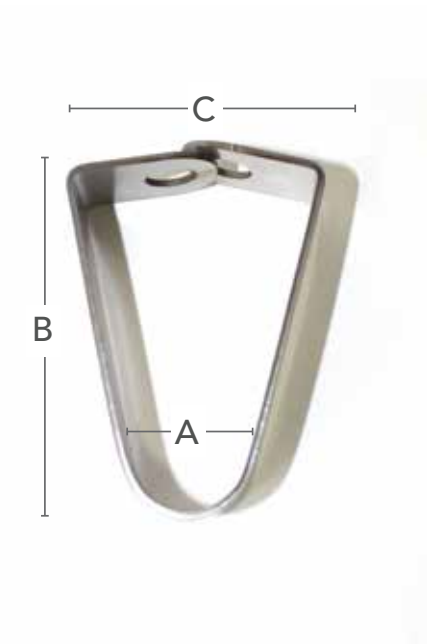
- WL12-S01 – 12"
- WL18-S01 – 18"
- WL24-S01 – 24"
- WL30-S01 – 30"
- WL36-S01 – 36"
- WL40-S01 – 40"
- WL48-S01 – 48"
- WL60-S01 – 60"

# PIPE HANGERS



## Spinning J-Hook (1/4" J-hook with screw plate)

Part #	Description
<b>JHS-3X1.50</b>	SPINNING J-HOOK BRACKET - 3" LENGTH ID X 1.5"
<b>JHS-5X1.50</b>	SPINNING J-HOOK BRACKET - 5" LENGTH ID X 1.5"
<b>JHS-5.5X2.50</b>	SPINNING J-HOOK BRACKET - 5.5" LENGTH ID X 2.5"
<b>JHS-6X1.375</b>	SPINNING J-HOOK BRACKET - 6" LENGTH ID X 1.375"
<b>JHS-6.5X1.50</b>	SPINNING J-HOOK BRACKET - 6.5" LENGTH ID X 1.5"
<b>JHS-6.5X2.50</b>	SPINNING J-HOOK BRACKET - 6.5" LENGTH ID X 2.5"
<b>JHS-6.5X3.50</b>	SPINNING J-HOOK BRACKET - 6.5" LENGTH ID X 3.5"
<b>JHS-7X2.50</b>	SPINNING J-HOOK BRACKET - 7" LENGTH ID X 2.5"
<b>JHS-9.5X1.125</b>	SPINNING J-HOOK BRACKET - 9.5" LENGTH ID X 1.125"
<b>JHS-9.5X2.50</b>	SPINNING J-HOOK BRACKET - 9.5" LENGTH ID X 2.5"



## Pipe Hanger Loops (3/8" Hole)

PART #	PVC PIPE SIZE	DIM-A	DIM-B	DIM-C
<b>PIPEHANGER-.5</b>	1/2"	0.84	2.625	1.25
<b>PIPEHANGER-.75</b>	3/4"	1.05	2.625	1.25
<b>PIPEHANGER-1</b>	1"	1.315	2.75	1.375
<b>PIPEHANGER-1.25</b>	1.25"	1.66	3	1.375
<b>PIPEHANGER-1.5</b>	1.5"	1.9	3	1.5
<b>PIPEHANGER-2</b>	2"	2.375	3.25	1.625
<b>PIPEHANGER-2.5</b>	2.5"	2.875	3.75	1.75
<b>PIPEHANGER-3</b>	3"	3.5	4.25	1.875
<b>PIPEHANGER-3.5</b>	3.5"	4	4.75	2

# Pipe clamp brackets

To secure pit vent pipes.

2" Mounting Tabs 1 Screw Hole on Each End Part #	4" Mounting Tabs 2 Screw Holes on Each End Part #	Description
<b>HW-PC4-1</b>	<b>HW-PC4</b>	4.4" ID, 3/16" x 1.5" STRAP, PIPE CLAMP BRACKET
<b>HW-PC6-1</b>	<b>HW-PC6</b>	6.63" ID, 3/16" x 1.5" STRAP, PIPE CLAMP BRACKET
<b>HW-PC8-1</b>	<b>HW-PC8</b>	8.63" ID, 3/16" x 1.5" STRAP, PIPE CLAMP BRACKET
<b>HW-PC10-1</b>	<b>HW-PC10</b>	10.75" ID, 3/16" x 1.5" STRAP, PIPE CLAMP BRACKET
<b>HW-PC12-1</b>	<b>HW-PC12</b>	12.75" ID, 3/16" x 1.5" STRAP, PIPE CLAMP BRACKET

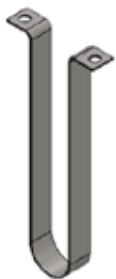


**2" Mounting Tabs**  
1 Screw hole on each



**4" Mounting Tabs**  
2 Screw holes on each

## PIPE STRAPS



**MSC-014**

Pipe hanger strap for 3/4" schedule 40 tube, 1.13" ID x 6" length, 18 GA 304SS

# PIT FAN TRANSITIONS

- Sturdy stainless steel welded transitions
- Constructed of 18-12 GA 304 stainless steel
- SDI also makes transitions in other sizes, variations and is compatible with other brands of fans
- Designed to lowa DNR standards
- NEW - Top and side adjustable fan brackets
- For easier installation, now featuring keyhole shaped install holes on top flange



## Transition Model 300

### TRS-300-14AP

Model 300 Transition, fits 14" AP fan

### TRS-300-18AP

Model 300 Transition, fits 18" AP fan

### TRS-300-24AP

Model 300 Transition, fits 24" AP fan

### TRS-300-20MFSYS1

Model 300 Transition, fits 20" Multifan system 1 fan

### TRS-300-24MFSYS1

Model 300 Transition, fits 24" Multifan system 1 fan

### TRS-300-20MFSYS4

Model 300 Transition, fits 20" Multifan system 4 fan

### TRS-300-24MFSYS4

Model 300 Transition, fits 24" Multifan system 4 fan

### TRS-300-21RAYPMC

Model 300 Transition, fits 21" VAL-CO power miser fan

### TRS-300-24RAYPMC

Model 300 Transition, fits 24" VAL-CO power miser fan





## Transition Model 600

### TRS-600-14AP

Model 600 Transition, fits 14" AP fan

### TRS-600-18AP

Model 600 Transition, fits 18" AP fan

### TRS-600-24AP

Model 600 Transition, fits 24" AP fan

### TRS-600-20MFSYS1

Model 600 Transition, fits 20" multifan system 1 fan

### TRS-600-24MFSYS1

Model 600 Transition, fits 24" multifan system 1 fan

### TRS-600-20MFSYS4

Model 600 Transition, fits 20" multifan system 4 fan

### TRS-600-24MFSYS4

Model 600 Transition, fits 24" multifan system 4 fan

### TRS-600-21RAYPMC

Model 600 Transition, fits 21" VAL-CO Power miser fan

### TRS-600-24RAYPMC

Model 600 Transition, fits 24" VAL-CO Power miser fan



## Transition Model 800

### TRS-800-14AP

Model 800 Transition, fits 14" AP fan

### TRS-800-18AP

Model 800 Transition, fits 18" AP fan

### TRS-800-24AP

Model 800 Transition, fits 24" AP fan

### TRS-800-20MFSYS1

Model 800 Transition, fits 20" multifan system 1 fan

### TRS-800-24MFSYS1

Model 800 Transition, fits 24" multifan system 1 fan

### TRS-800-20MFSYS4

Model 800 Transition, fits 20" multifan system 4 fan

### TRS-800-24MFSYS4

Model 800 Transition, fits 24" multifan system 4 fan

### TRS-800-21RAYPMC

Model 800 Transition, fits 21" VAL-CO power miser fan

### TRS-800-24RAYPMC

Model 800 Transition, fits 24" VAL-CO power miser fan

## ROUND PUMP-OUT STYLES



## Transition Model 700

### TRS-700-24AP

Model 700 transition, fits 24" AP fan

### TRS-700-24AERO

Model 700 transition, fits 24" Aerotech fan



## Transition Model 710

### TRS-710-24CT

Model 710 Transition, fits 24" CHORE-TIME Fan

# CURTAIN ACCESSORIES

## Curtain Pockets

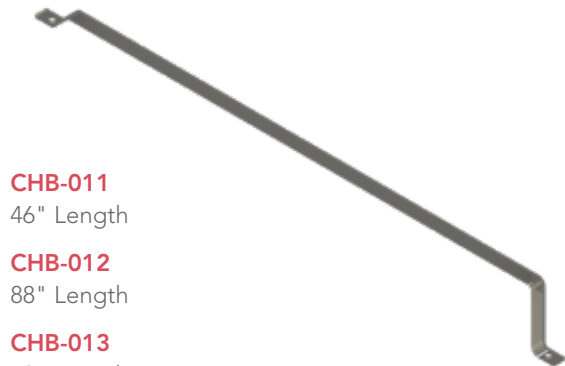
These stainless steel curtain pockets will withstand all that mother nature can throw at it. Available in six sizes, we have options to best fit your needs. Sold as a pair.



## Curtain Pockets

Part #	Description
<b>CPT48-01</b>	18" W x 48" H, CURTAIN POCKETS (PAIR)
<b>CPT66-01</b>	18" W x 66" H, CURTAIN POCKETS (PAIR)
<b>CPT78-01</b>	18" W x 78" H, CURTAIN POCKETS (PAIR)
<b>CPT84-01</b>	18" W x 84" H, CURTAIN POCKETS (PAIR)
<b>CPT96-01</b>	18" W x 96" H, CURTAIN POCKETS (PAIR)
<b>CPT108-01</b>	18" W x 108" H, CURTAIN POCKETS (PAIR)

## 304 Stainless Steel Curtain Retaining Bar



- CHB-011**  
46" Length
- CHB-012**  
88" Length
- CHB-013**  
73" Length

## 304 Stainless Steel Curtain Brackets



**CHB-004**

**CHB-007**

**CHB-008**

# LATCHES & LOCKS

## SIMPLE LATCHES



**LH-004 (Latch Only)**  
Two-way livestock gate latch

**LH-104**  
With gate bracket



**LH-006 SLIDEBOLT**  
Slide & catch plate  
Can be used with padlock



**LH-011**  
4" x 2.25" Slide latch

## HINGE



**HINGE-001**  
Stainless steel 4" X 4" heavy duty ball Bearing square corner hinge



**LH-001**  
Padlock compatible  
3.5" x 5" latch for custom door applications.



**LH-007**  
Simple door latch for custom door applications.



**BARN-LATCH**  
Holes must be drilled for door on site. This latch can be Padlocked



**L-LATCH**  
Holes must be drilled for door on site



### No Drill Barn Latch

This latch uses the existing door hole with no drilling

**NODRILLLATCH-A**  
**NODRILLLATCH-B**

### Door Bar

Load-out door support bar, with a 28.94" swing arm. 304SSD

**DOORBAR-01**



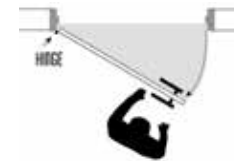
**LEFT HANDED INSWING**  
LEFTHANDEDINSWING1

**NODRILLLATCH-A**



**RIGHT HANDED INSWING**  
RIGHTHANDEDINSWING2

**NODRILLLATCH-B**



**RIGHT HANDED OUTSWING**  
RIGHTHANDEDOUTSWING3

**NODRILLLATCH-B**



**LEFT HANDED OUTSWING**  
LEFTHANDEDOUTSWING4

**NODRILLLATCH-A**

# TRIM

## Coving



A-002-120-18G (4")  
A-016-120-18G (6")



A-007-120-18G (4")  
A-005-120-18G (6")



A-026-120-16G (3")  
A-024-120-16G (4.5")



FL-002-120-18G (3")  
FL-004-120-18G (6")



## Expansion Joint Cover

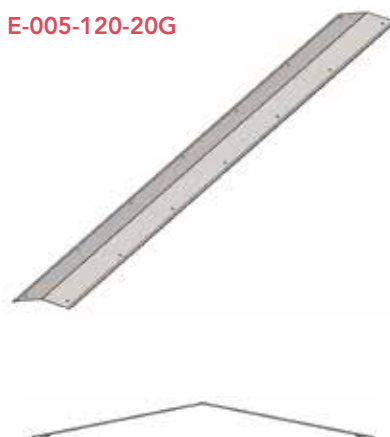
E-002-120-18G



E-003-120-18G



E-005-120-20G



E-008-120-16G



Available in other lengths and in 16, 18, or 20 GA. Contact your local dealer for more information.

## Corner Guards



**A-019-072-20G**

1.5" x 1.5" Corner guard  
72" length, with 1/8" nail holes  
20g 304SS

**A-011-048-18G**

1.5" x 1.5" Corner guard  
48" length, with 3/16" nail holes  
18g 304SS

**A-020-096-16G**

2" x 2" Corner guard  
96" length, with 1/8" nail holes  
16g 304SS

**A-014-096-18G**

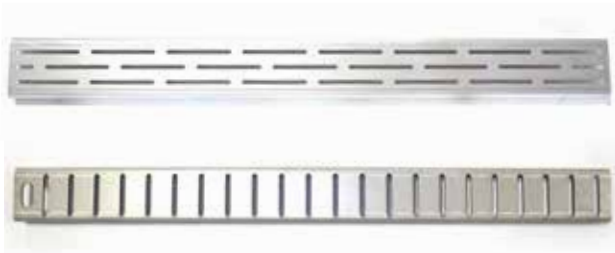
3" x 3" Corner guard  
96" length, with 3/16" nail holes  
18g 304SS



## Z channels

Z Channels available in multiple variations

## DRAINS & GRATES



### Drains & Drain Covers Many sizes available

This Stainless steel floor drain and drain cover not only looks great but also is extremely strong. Constructed of 1/8" stainless steel, this cover can handle the heaviest loads. Sold in 48" increments as needed.



### Boot Wash Grates Many sizes available

SDI's entirely stainless steel grate, constructed with heavy duty tubing frame and covered with Flattened Expanded stainless, provides a durable drain grate for high-traffic boot wash areas.

## GARDEN HOSE HANGERS



### HOSEHANGER

Constructed of 12 GA 304 stainless steel, this hose hanger will stand up to any abuse and wear.

TRUSTED  
TOP  
SELLER

### Shop Floor Drains

This 'magic' drain is perfect for your shop or garage. With only a narrow slot visible on the surface, this tidy drain keeps your shop spic-and-span. The drain tracks carry away melt-off snow & dirt "out of sight" below the floor. Each track empties into the drain box, which is complete with a filter basket, that is easily removed for cleaning.

**THIS DRAIN MUST BE SET IN FLOOR, PRIOR TO FLOOR BEING CONCRETED.**

Call SDI for more details!



### Drains

Each drain box includes a removable lid and a filter basket

#### DRAIN7

14"x14.5" Drain box opening on both sides for bolt on drain track, 3.5" sewer access hole on one side, 18" deep



#### DRAIN9

14"x14.5" Drain box, 3.5" sewer access hole on one side, 12" deep



#### DRAIN8

14"x14.5" Drain box, 3.5" sewer access hole on the bottom, 12" deep



#### DRAIN7-TRACK48

48" Drain track segments; Bolt together in 48" increments to form long drain tracks on drain type #7



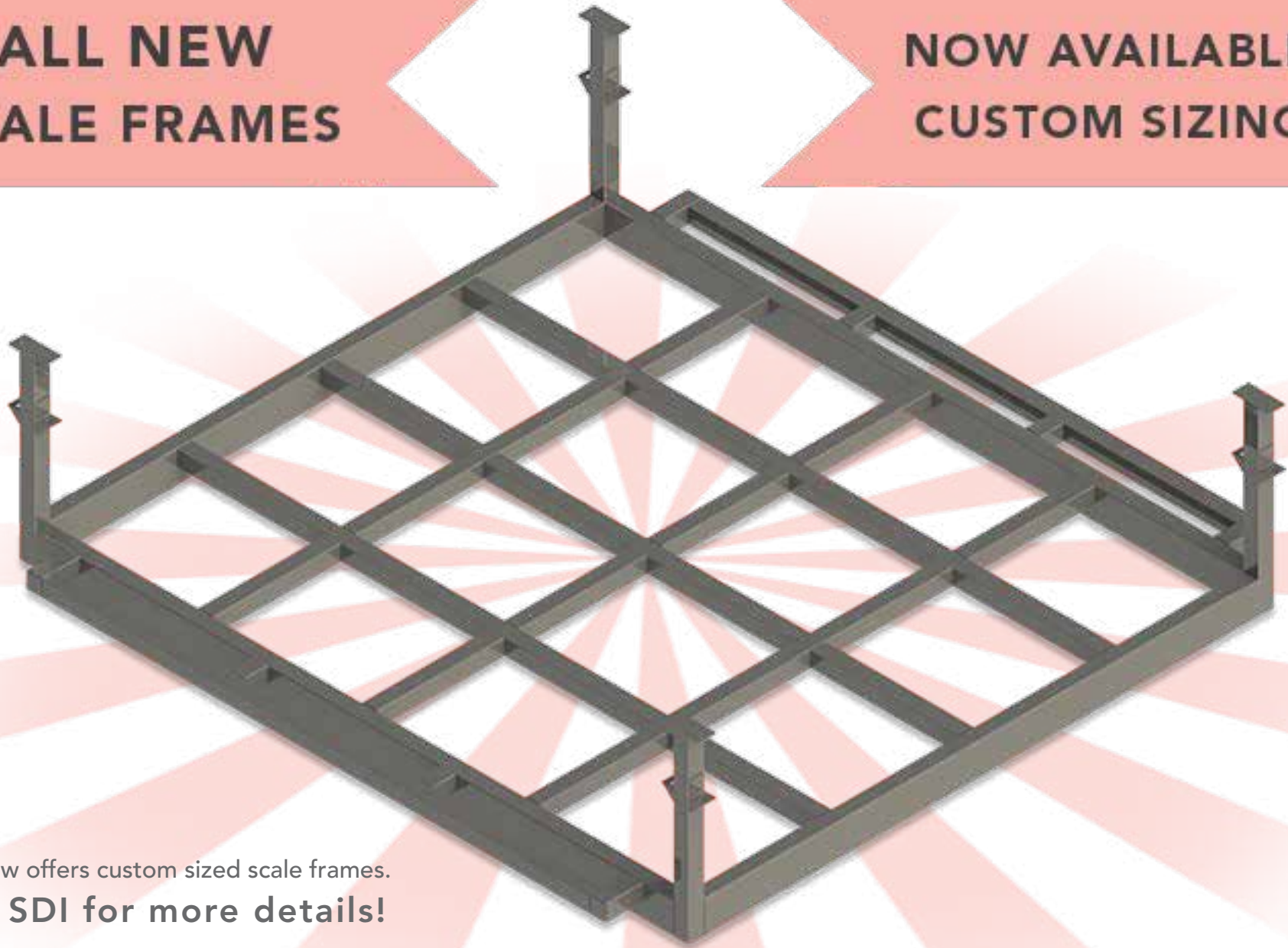
### 10ft. Pit Ladder

#### LD-002

Made with 7 guage, 304 Stainless steel and designed for wall mounting.

**ALL NEW  
SCALE FRAMES**

**NOW AVAILABLE  
CUSTOM SIZING**



SDI now offers custom sized scale frames.  
**Call SDI for more details!**

## WIRE MESH

### Poultry Netting



#### Stainless Steel Poultry Netting | Full Rolls Only, (UV-Resistant)

Part #	Description
<b>MESH-HEX1X20-1X200</b>	1' X 200' ROLL, POULTRY NETTING, 1" HEXAGON 20 GA 304SS
<b>MESH-HEX1X20-2X200</b>	2' X 200' ROLL, POULTRY NETTING, 1" HEXAGON 20 GA 304SS
<b>MESH-HEX1X20-4X200</b>	4' X 200' ROLL, POULTRY NETTING, 1" HEXAGON 20 GA 304SS
<b>MESH-HEX1X20-5X200</b>	5' X 200' ROLL, POULTRY NETTING, 1" HEXAGON 20 GA 304SS
<b>MESH-HEX1X20-6X200</b>	6' X 200' ROLL, POULTRY NETTING, 1" HEXAGON 20 GA 304SS
<b>MESH-HEX1X20-7X200</b>	7' X 200' ROLL, POULTRY NETTING, 1" HEXAGON 20 GA 304SS

### Welded Wire Panel



Welded one piece stainless construction. For curtain & fan guard. Check with SDI for other panel sizes.

#### Stainless Steel Welded Wire Panel | (UV-Resistant)

Part #	Description
<b>HP001-24x96</b>	2' X 8' PANEL, WELDED WIRE, 2" X 4" GRID 3/16" WIRE, 304SS



## CHAINS



Stainless Steel Double Loop Chain - #1 (.11 Diameter)

Part #	Description
<b>CHN-#1DLOOP</b>	BY THE FOOT/CUT TO LENGTH
<b>CHN-#1DLOOP-100</b>	100' SPOOL
<b>CHN-#1DLOOP-500</b>	500' SPOOL



Stainless Proof Coil Chain - 1/8"

Part #	Description
<b>CHN-.125COIL</b>	BY THE FOOT/CUT TO LENGTH
<b>CHN-.125COIL-100</b>	100' SPOOL
<b>CHN-.125COIL-500</b>	500' SPOOL

## WIRE

### Inlet Wire

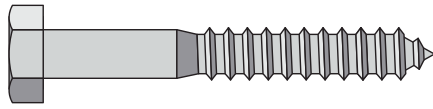


Stainless Steel Wire - Single Strand Wire - (Not Cable)

Part #	Description
<b>32-100582</b>	1/8" INLET WIRE 1,200' ROLL 304SS
<b>32-100583</b>	1/8" WIRE; 304SS BY THE FOOT/CUT TO LENGTH

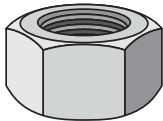
SDI specializes in a wide range of stainless steel products! For other chain & wire sizes contact SDI

# HARDWARE



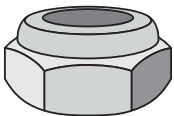
## STAINLESS STEEL LAG SCREWS

Part #	Size
<b>.25X1-LAG BT</b>	1/4" x 1"
<b>.25X3-LAG BT</b>	1/4" x 3"



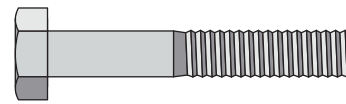
## STAINLESS STEEL HEX NUTS

Part #	Size
<b>.25-NT</b>	1/4" - 20
<b>.313-NT</b>	5/16" - 18
<b>.375-NT</b>	3/8" - 16
<b>.50-NT</b>	1/2" - 13



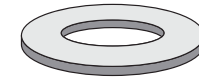
## STAINLESS STEEL NYLON LOCK NUTS

Part #	Size
<b>.25-NYLOCK</b>	1/4" - 20
<b>.313-NYLOCK</b>	5/16" - 18
<b>.375-NYLOCK</b>	3/8" - 16
<b>.50-NYLOCK</b>	1/2" - 13



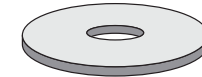
## STAINLESS STEEL HEX BOLTS

Part #	Size	Thread Length
<b>.25X.50-BT</b>	1/4" x 1/2"	3/4"
<b>.25X.75-BT</b>	1/4" x 3/4"	3/4"
<b>.25X1-BT</b>	1/4" x 1"	3/4"
<b>.25X1.25-BT</b>	1/4" x 1-1/4"	3/4"
<b>.25X1.5-BT</b>	1/4" x 1-1/2"	3/4"
<b>.25X1.75-BT</b>	1/4" x 1-3/4"	3/4"
<b>.25X2-BT</b>	1/4" x 2"	3/4"
<b>.25X2.25-BT</b>	1/4" x 2-1/4"	3/4"
<b>.25X2.5-BT</b>	1/4" x 2-1/2"	3/4"
<b>.25X2.75-BT</b>	1/4" x 2-3/4"	3/4"
<b>.25X3-BT</b>	1/4" x 3"	3/4"
<b>.313X.75-BT</b>	5/16" x 3/4"	7/8"
<b>.313X1-BT</b>	5/16" x 1"	7/8"
<b>.313X1.5-BT</b>	5/16" x 1-1/2"	7/8"
<b>.313X2-BT</b>	5/16" x 2"	7/8"
<b>.313X2.5-BT</b>	5/16" x 2-1/2"	7/8"
<b>.313X3-BT</b>	5/16" x 3"	7/8"
<b>.313X3.5-BT</b>	5/16" x 3-1/2"	7/8"
<b>.375X.50-BT</b>	3/8" x 1/2"	1"
<b>.375X.75-BT</b>	3/8" x 3/4"	1"
<b>.375X1-BT</b>	3/8" x 1"	1"
<b>.375X1.25-BT</b>	3/8" x 1-1/4"	1"
<b>.375X1.5-BT</b>	3/8" x 1-1/2"	1"
<b>.375X2-BT</b>	3/8" x 2"	1"
<b>.375X2.5-BT</b>	3/8" x 2-1/2"	1"
<b>.375X3-BT</b>	3/8" x 3"	1"
<b>.375X3.5-BT</b>	3/8" x 3-1/2"	1"
<b>.375X4-BT</b>	3/8" x 4"	1"
<b>.50X1-BT</b>	1/2" x 1"	1-1/2"
<b>.50X1.5-BT</b>	1/2" x 1-1/2"	1-1/2"
<b>.50X2-BT</b>	1/2" x 2"	1-1/2"
<b>.50X2.5-BT</b>	1/2" x 2-1/2"	1-1/2"
<b>.50X3-BT</b>	1/2" x 3"	1-1/2"



## STAINLESS STEEL FLAT WASHERS

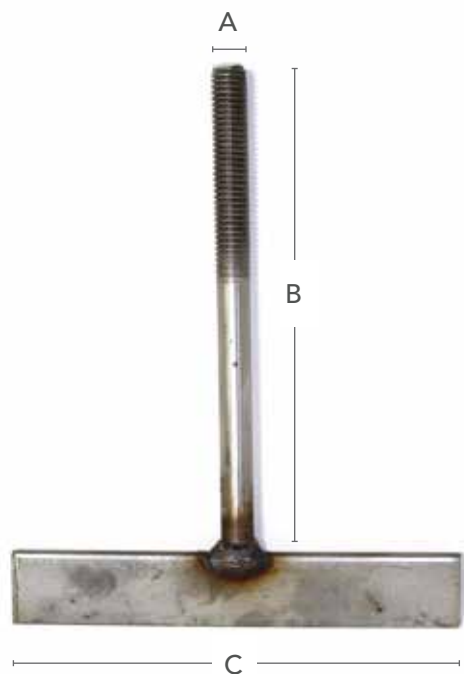
Part #	Size
<b>.25-WS</b>	1/4" x 5/8"
<b>.313-WS</b>	5/16" x 3/4"
<b>.375-WS</b>	3/8" x 7/8"
<b>.50-WS</b>	1/2" x 1-1/4"



## STAINLESS STEEL FENDER WASHERS

Part #	Size
<b>.25X1-WS</b>	1/4" x 1"
<b>.313X1.5-WS</b>	5/16" x 1-1/2"
<b>.375X1.5-WS</b>	3/8" x 1-1/2"
<b>.50X1.5-WS</b>	1/2" x 1-1/2"
<b>.50X2-WS</b>	1/2" x 2"

T-bolts strap thickness is 3/16" x 1".



Part #	A - Bolt Shank	B - Bolt Length	C - Strap Length
<b>TBS-027</b>	5/16"	1"	2"
<b>TBS-034</b>	5/16"	1"	1.5"
<b>TBS-041</b>	5/16"	1.625"	1.5"
<b>TBS-018</b>	5/16"	1.625"	2"
<b>TBS-025</b>	5/16"	1.625"	2.5"
<b>TBS-046</b>	3/8"	1.625"	4.5"
<b>TBS-033</b>	3/8"	1.625"	6"
<b>TBS-026</b>	3/8"	1.625"	2.5"
<b>TBS-032</b>	3/8"	1.625"	2.75"
<b>TBS-013</b>	3/8"	1.625"	3"
<b>TBS-024</b>	3/8"	2"	1.5"
<b>TBS-011</b>	3/8"	2"	3"
<b>TBS-014</b>	3/8"	3"	6"
<b>TBS-030</b>	3/8"	4"	4"
<b>TBS-044</b>	3/8"	4.25"	4"
<b>TBS-036</b>	3/8"	4.5"	6"
<b>TBS-008</b>	3/8"	5"	6"
<b>TBS-005</b>	3/8"	5.5"	6"
<b>TBS-002</b>	3/8"	6"	6"
<b>TBS-003</b>	3/8"	6.5"	6"
<b>TBS-010</b>	3/8"	7"	6"
<b>TBS-038</b>	3/8"	7.5"	6"
<b>TBS-031</b>	1/2"	3"	6"
<b>TBS-035</b>	1/2"	4"	6"
<b>TBS-023</b>	1/2"	4.5"	6"
<b>TBS-001</b>	1/2"	5"	6"
<b>TBS-019</b>	1/2"	5.25"	6"
<b>TBS-006</b>	1/2"	5.5"	6"
<b>TBS-004</b>	1/2"	6"	6"
<b>TBS-007</b>	1/2"	6.5"	6"
<b>TBS-009</b>	1/2"	7"	6"
<b>TBS-028</b>	1/2"	7.25"	6"
<b>TBS-016</b>	1/2"	7.5"	6"

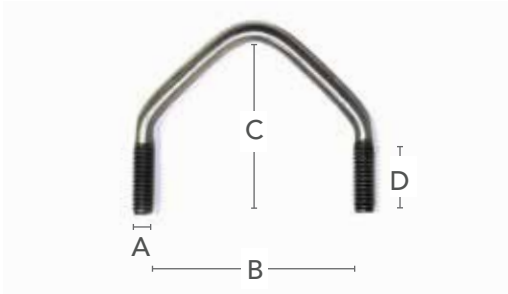


### Cast T-Bolts

**TBC-001**  
3/8" HEX HEAD BOLT

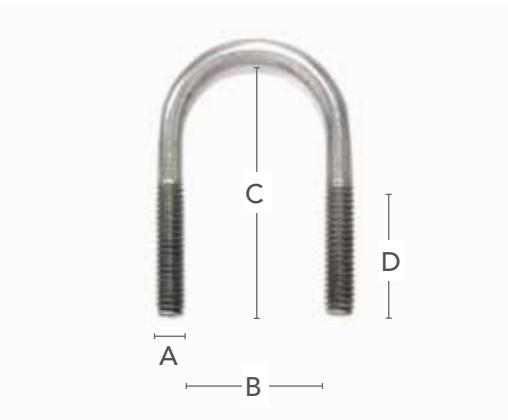
**TBC-002**  
3/8" BUTTON HEAD BOLT

# ANCHORS & WIRE PRODUCTS



## V-Bolt

Part #	A – Bolt Shank	B – ID Leg	C – ID Between Legs	D – Thread Length
<b>VB1-.25-01</b>	1/4"	1.375" + 0.875"	2.125"	0.75"



## U-Bolts

Part #	A – Bolt Shank	B – ID Leg	C – ID Between Legs	D – Thread Length
<b>UB1R-.25X1.5-1</b>	1/4"	1 1/2"	1 1/8"	3/4"
<b>UB1R-.25X1.75-1</b>	1/4"	1 3/4"	1 1/16"	1"
<b>UB1R-.25X1.75-2</b>	1/4"	1 3/4"	11/16"	1"
<b>UB1R-.25X1.875-1</b>	1/4"	1 7/8"	7/8"	1"
<b>UB1R-.25X2-1</b>	1/4"	2"	1 1/8"	1"
<b>UB1R-.25X2.5-1</b>	1/4"	2 1/2"	1 1/2"	1"
<b>UB1R-.25X4.375-1</b>	1/4"	4 3/8"	3"	1"
<b>UB1R-.313X1.375-1</b>	5/16"	1 3/8"	13/16"	3/4"
<b>UB1R-.313X2.25-1</b>	5/16"	1 1/4"	1"	1 3/8"
<b>UB1R-.313X2.3-1</b>	5/16"	2 5/16"	1 3/8"	1"
<b>UB1R-.313X2.4-1</b>	5/16"	2 7/16"	1 3/8"	1"
<b>UB1R-.313X4-1</b>	5/16"	4"	3 1/2"	1 1/2"
<b>UB1R-.375X2.25-1</b>	3/8"	2 1/4"	1"	1"



## S-Hooks

Part #	Description
<b>SH1R-.125X16-1</b>	1/8" x 16" LONG, S-HOOK
<b>SH1R-.25X6-1</b>	1/4" x 6" LONG, S-HOOK
<b>SH1R-.25X16-1</b>	1/4" x 16" LONG, S-HOOK



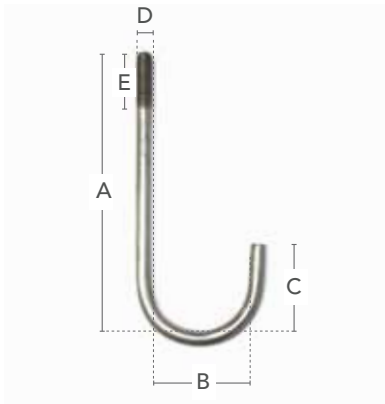
## Rod Bender and Threader Capabilities

SDI owns and operates a rod bender and threader capable of bending rod from 0.125" to 0.5" in diameter to produce custom wire products to meet your needs.

# ANCHORS & WIRE PRODUCTS

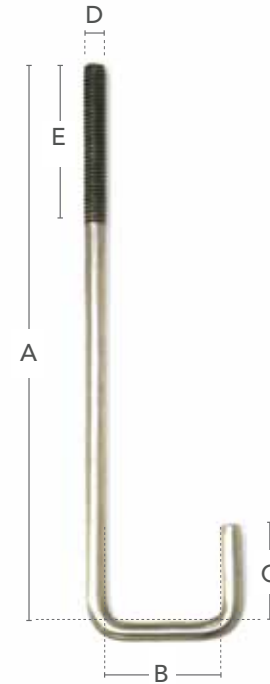
## Round J-Bolts

Part #	A	B	C	D	E
<b>JB1R-.25X2.25-1</b>	2 1/4"	7/8"	7/8"	1/4"	1 3/8"
<b>JB1R-.25X3-1</b>	3"	3/8"	3/4"	1/4"	2"
<b>JB1R-.313X2.25-1</b>	2 1/4"	1/2"	3/4"	5/16"	1"
<b>JB1R-.313X3.5-1</b>	3 1/2"	3/4"	1"	5/16"	1 1/2"
<b>JB1R-.313X4-1</b>	4"	3/4"	3/4"	5/16"	1 1/2"
<b>JB1R-.313X5-1</b>	5"	3/4"	1"	5/16"	2"
<b>JB1R-.313X6-1</b>	6"	3/4"	1"	5/16"	1"
<b>JB1R-.375X1.5-1</b>	1 1/2"	1/2"	1/2"	3/8"	1"
<b>JB1R-.375X3.25-1</b>	3 1/4"	3/8"	3/4"	3/8"	1 1/4"
<b>JB1R-.375X3.5-1</b>	3 1/2"	3/4"	3/4"	3/8"	1"
<b>JB1R-.375X3.75-1</b>	3 3/4"	1/2"	7/8"	3/8"	2"
<b>JB1R-.375X4.375-1</b>	4 3/8"	7/8"	1 3/8"	3/8"	1 1/4"
<b>JB1R-.375X4.75-1</b>	4 3/4"	7/8"	1 3/8"	3/8"	1 1/4"
<b>JB1R-.375X4-1</b>	4"	1"	1"	3/8"	2"
<b>JB1R-.375X4-2</b>	4"	3/4"	3/4"	3/8"	1"
<b>JB1R-.375X5-2</b>	5"	1"	1"	3/8"	2"
<b>JB1R-.375X5-1</b>	5"	3/4"	1"	3/8"	2"
<b>JB1R-.375X7.5-1</b>	7 1/2"	1 3/4"	1"	3/8"	2"
<b>JB1R-.375X7.5-2</b>	7 1/2"	1"	1"	3/8"	2"
<b>JB1R-.375X7-1</b>	7"	3/4"	7/8"	3/8"	2 1/4"
<b>JB1R-.375X8-1</b>	8"	3/4"	7/8"	3/8"	2 1/4"
<b>JB1R-.375X8-2</b>	8"	1 1/8"	1"	3/8"	2"



## Square J-Bolts

Part #	A	B	C	D	E
<b>JB1S-.25X6-1</b>	6"	1 1/2"	1"	1/4"	2 1/2"
<b>JB1S-.313X6.05-1</b>	6 1/16"	1 1/4"	15/16"	5/16"	3"
<b>JB1S-.313X7.5-1</b>	7 1/2"	1 7/8"	1"	5/16"	3"
<b>JB1S-.313X8.25-1</b>	8 1/4"	1 1/4"	1"	5/16"	3"
<b>JB1S-.313X9.05-1</b>	9 1/16"	1 1/4"	15/16"	5/16"	4"
<b>JB1S-.375X5.75-1</b>	5 3/4"	1 1/2"	1"	3/8"	2"
<b>JB1S-.375X6.5-1</b>	6 1/2"	2"	1"	3/8"	2 1/2"
<b>JB1S-.375X6.75-1</b>	6 3/4"	2"	1 1/4"	3/8"	4"
<b>JB1S-.375X7.75-1</b>	7 3/4"	2"	1 1/4"	3/8"	4"
<b>JB1S-.375X7-1</b>	7"	3"	1"	3/8"	2"
<b>JB1S-.375X8-1</b>	8"	2"	1"	3/8"	2 1/2"





# ANCHORS & WIRE PRODUCTS



## Concrete Anchors

Part #	Description
<b>ANCHOR-3/8X7</b>	3/8" x 7" CONCRETE ANCHOR (BOLT ONLY)
<b>ANCHOR-3/8X7-K</b>	3/8" x 7" CONCRETE ANCHOR KIT (INCLUDES WASHER & NUT)
<b>ANCHOR-3/8X8</b>	3/8" x 8" CONCRETE ANCHOR (BOLT ONLY)
<b>ANCHOR-3/8X8-K</b>	3/8" x 8" CONCRETE ANCHOR KIT (INCLUDES WASHER & NUT)
<b>ANCHOR-3/8X10</b>	3/8" x 10" CONCRETE ANCHOR (BOLT ONLY)
<b>ANCHOR-3/8X10-K</b>	3/8" x 10" CONCRETE ANCHOR KIT (INCLUDES WASHER & NUT)
<b>ANCHOR-1/2X7</b>	1/2" x 7" CONCRETE ANCHOR (BOLT ONLY)
<b>ANCHOR-1/2X7-K</b>	1/2" x 7" CONCRETE ANCHOR KIT (INCLUDES WASHER & NUT)
<b>ANCHOR-1/2X8</b>	1/2" x 8" CONCRETE ANCHOR (BOLT ONLY)
<b>ANCHOR-1/2X8-K</b>	1/2" x 8" CONCRETE ANCHOR KIT (INCLUDES WASHER & NUT)
<b>ANCHOR-1/2X10</b>	1/2" x 10" CONCRETE ANCHOR (BOLT ONLY)
<b>ANCHOR-1/2X10-K</b>	1/2" x 10" CONCRETE ANCHOR KIT (INCLUDES WASHER & NUT)

## Nursery Flooring Spanner Bar

Designed to be placed under plastic nursery flooring so that J-bolts can hook on the bottom of its center section

Part #	Description
<b>SB-005</b>	Spanner Bar, 24" OC
<b>SB-008</b>	Spanner Bar, 18" OC

## Nursery Flooring Bolt - NEW PRODUCT

Similar to a j-bolt, nursery bolts anchor equipment down with a square bottom hole. This allows a strap to slide through multiple square nursery bolts. If one becomes loose, the others prevent it from falling into the pit.

Part #	A	B	C	D	E
<b>NG-000-031</b>	5/16"	5.75"	1.5"	3.5"	3.75"



## Nursery Flooring Strap

Part #	Description
<b>NG-000-037-22</b>	22" FLOORING STRAP USED WITH NG-000-031, 3/16" 304SS
<b>NG-000-037-26</b>	26" FLOORING STRAP USED WITH NG-000-031, 3/16" 304SS
<b>NG-000-037-28</b>	28" FLOORING STRAP USED WITH NG-000-031, 3/16" 304SS
<b>NG-000-037-30</b>	30" FLOORING STRAP USED WITH NG-000-031, 3/16" 304SS
<b>NG-000-037-40</b>	40" FLOORING STRAP USED WITH NG-000-031, 3/16" 304SS



# FARROWING CRATES

## Farrowing Crate Sizes

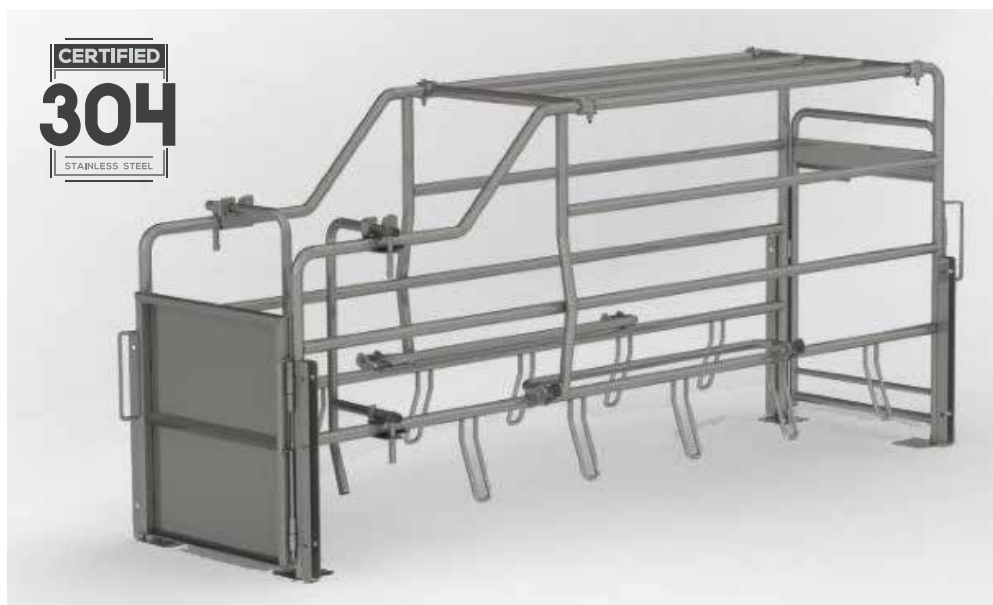
- 84" Standard farrowing crate
- 90" Standard farrowing crate
- 96" Standard farrowing crate

## Features

- **Captured pins:** Pins fixed in head & rear gates never fall out - avoiding loss. Gates swing as on a hinge. **KEEP GATES IN PLACE!**
- **Anti-crush bars:** Prevent sows from falling and give piglets time to step aside.
- **Finger bars:** Protect and preserve piglets. Solid finger bars optional.
- **Flip-out feeder latch:** Top latch on head-gate releases to flip feeder out & down for easy cleaning. Compatible with choice of sow feeders.
- **Rump rails:** allow you to open the rear door and work with the sow. Rails can be folded out of the way when not in use.
- **Rear gate choices:** multiple styles available for your application & preference.

## Accessories (Sold Separately)

- **Heat lamp arm**
- **Sow card:** Multiple types and mount locations available
- **Sow feeder and waterer**
- **Stainless steel creep panels**



# FARROWING TURNAROUND PEN

## Farrowing Turnaround Pen Sizes

- Farrowing turnaround pen, 7' long x 6' wide
- Farrowing turnaround pen, 7' long x 7' wide
- Farrowing turnaround pen, 8' long X 6' wide

## Features

- **Adjustable sides:** Front & back of pen sides can be moved to various settings for best sow accommodation & care.
- **Gates above rear creeps:** Small gates on either side of sow area allow staff fast and safe inspection of piglets.
- **Side & gate latches:** Spring-loaded latches are easily operated with one hand.
- **Secure space for piglets:** "Run ways" provide safe space for piglets during sow movement.
- **Available in multiple lengths & widths.**
- **Efficient installation:** Designed with pre-fab "panels" that pin together for efficient set-up. Pens connect with minimal hardware/tools required.
- **Secure pins:** Pins are fastened to pen, so that they're never lost.
- **Finger bars:** Protect and preserve piglets. Solid finger bars optional.
- **Flip-out feeder latch:** Top latch on head-gate releases to flip feeder out & down for easy cleaning. Compatible with choice of sow feeders.
- **Premier design:** Engineered in collaboration with industry professionals for superior user friendly features as well as animal welfare compliance.
- **Hygienic style:** Stainless welded and capped parts provide easy maintenance and good hygiene.
- **Rear door with rump rail**

## Accessories (Sold separately)

- **Heat lamp arm**
- **Sow card:** Multiple types and mount locations available
- **Sow feeder and waterer**
- **Stainless steel creep panels**



# GESTATION STALL

## Features

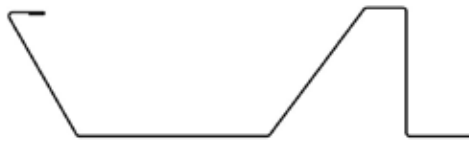
- **Built tough:** Solid construction of 304 stainless steel tubing, eliminating concerns about rusty or broken parts.
- **Hygienic style:** stainless welded and capped parts provide easy maintenance and good hygiene.
- **Sizes options:** Gestation stalls are available in 7' or 7'6" lengths and widths of 22", 23", 25", 26" or 28".
- **Includes:** Side, front, and rear door, top straps, and floor straps. (hardware not included)
- **Efficient installation:** NO WELD - Bolt-together design aids easy installation in any application. Simple break-down for long distance shipments.



# TROUGH

SDI produces 60+ styles of trough, with different bend formations.

- Available in either 18 or 16 GA 304 stainless steel
- We also provide accessories, such as: blank end caps, caps with drain fittings, trough dams, tie-down straps, "weld-on" bolt tabs, etc.



**TR-001-18G**  
Trough style #1, 18 GA 304SS

**TR-001.16G**  
Trough style #1, 16 GA 304SS

**TR-001-001**  
Blank/solid end cap, for trough style #1, 12 GA 304SS

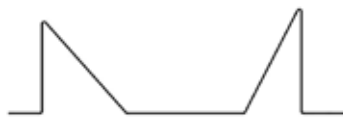
**TR-001-004**  
End cap with 2" drain fitting, for trough style #1, 12 GA 304SS



**TR-014.18G**  
**TR-014.16G**  
**TR-014-001**  
**TR-014-004**



**TR-026-18G**  
**TR-026-16G**  
**TR-026-001**  
**TR-026-004**



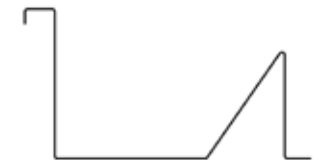
**TR-028.18G**  
**TR-028.16G**  
**TR-028-001**  
**TR-028-004**



**TR-029.18G**  
**TR-029.16G**  
**TR-029-001**  
**TR-029-004**



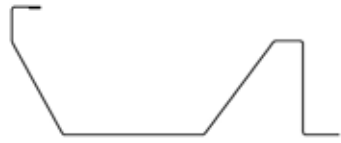
**TR-030.18G**  
**TR-030.16G**  
**TR-030-001**  
**TR-030-004**



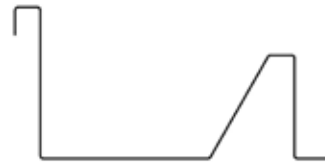
**TR-034.18G**  
**TR-034.16G**  
**TR-034-001**  
**TR-034-004**



# TROUGH



TR-037.18G  
TR-037.16G  
TR-037-001  
TR-037-004



TR-039S.18G  
TR-039S.16G  
TR-039S-001  
TR-039S-004



TR-040.18G  
TR-040.16G  
TR-040-001  
TR-040-004



TR-043.18G  
TR-043.16G  
TR-043-001  
TR-043-004



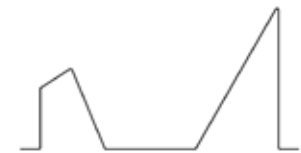
TR-045.18G  
TR-045.16G  
TR-045-001  
TR-045-004



TR-046.18G  
TR-046.16G  
TR-046-001  
TR-046-004



TR-047.18G  
TR-047.16G  
TR-047-001  
TR-047-004



TR-049.18G  
TR-049.16G  
TR-049-001  
TR-049-004



## Flat Straps

Part #	Description
1X10GFLAT	1" Flat Strap, 10' Length, 10 GA 304SS
1.5X10GFLAT	1.5" Flat Strap, 10' Length, 10 GA 304SS
1X3/16FLAT	1" Flat Strap, 10' Length, 3/16" 304SS
1.25X3/16FLAT	1.25" Flat Strap, 10' Length, 3/16" 304SS
1.5X3/16FLAT	1.5" Flat Strap, 10' Length, 3/16" 304SS
2X3/16FLAT	2" Flat Strap, 10' Length, 3/16" 304SS
4X3/16FLAT	4" Flat Strap, 10' Length, 3/16" 304SS
2X1/4FLAT	2" Flat Strap, 10' Length, 1/4" 304SS

# GATING



## CUSTOM GATING PACKAGES

SDI produces beautiful stainless steel gating packages for new construction or retrofit/remodel applications. We design to meet you needs.

Contact your local dealer for more information.



## LEGS/FOOTPLATES



**FPS-001**  
Short gate leg  
1/4" 304SS



**FPS-002**  
Tall gate leg (32")  
with gussets  
1/4" 304SS



**FPS-007**  
"L" Bracket gate leg  
1/4" 304SS



**FPS-300**  
(FITS 3/8" FLOOR ANCHORS)  
"Universal" 2-Piece gate leg  
1/4" 304SS (Does not include hardware)



**FPS-350**  
(FITS 1/2" FLOOR ANCHORS)  
"Universal" 2-Piece gate leg  
1/4" 304SS (Does not include hardware)

## HANDLES



### Top Handle

Bolts to Plank  
Hardware Included

**HD-002**  
For 1-3/8" Gate plank

**C01-HD-002**  
For 1-7/8" Gate plank

**HD-003**  
For 2" Gate plank



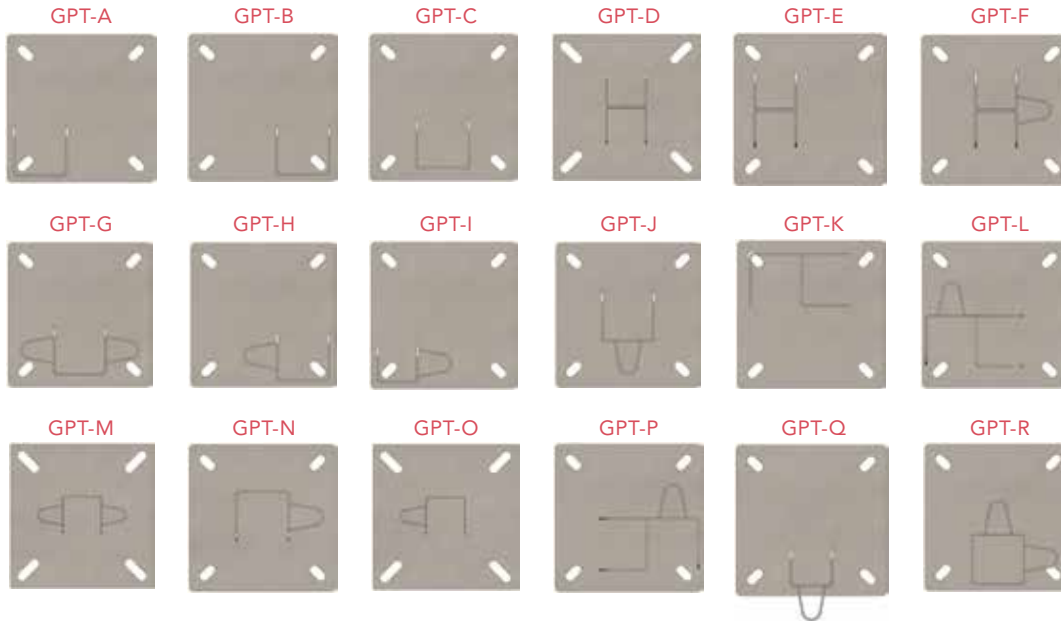
**HD-004**  
Universal side handle for gate plank  
(bolts through plank) Includes hardware



**C-034-004-14G**  
Gate plank shoes (bolts to plank and protects  
it against the floor) Includes hardware

# POSTS & BRACKETS

- 6" x 6" 10 GA stainless steel base plate
- Base holes are 3/8" x 3/8" slots
- 14 GA stainless steel posts and channels




## Gate Posts (GPT)

Model Number	Dimensions
<b>GPT-06.1530</b> -(Insert letter preference)	1 1/2" x 30"
<b>GPT-06.230</b> -(Insert letter preference)	2" x 30"
<b>GPT-06.232</b> -(Insert letter preference)	2" x 32"
<b>GPT-06.238</b> -(Insert letter preference)	2" x 38"
<b>GPT-06.240</b> -(Insert letter preference)	2" x 40"

For Example:  
To order 2" x 30" Post, Style "J" use the following part #:  
**GPT-06.230-J**


**GPT-00-005** 2" loops only

## Wall Bracket, With Loops




Model Number	Dimensions
<b>GPT-00.1530-WB</b>	1 1/2" x 30"
<b>GPT-00.230-WB</b>	2" x 30"
<b>GPT-00.232-WB</b>	2" x 32"
<b>GPT-00.238-WB</b>	2" x 38"
<b>GPT-00.240-WB</b>	2" x 40"

## Gate End, With Loops




Model Number	Dimensions
<b>GPT-00.1530-GE</b>	1 1/2" x 30"
<b>GPT-00.230-GE</b>	2" x 30"
<b>GPT-00.232-GE</b>	2" x 32"
<b>GPT-00.238-GE</b>	2" x 38"
<b>GPT-00.240-GE</b>	2" x 40"

## Gate Rod/Pin



Model Number	Dimensions
<b>PIN-0001</b>	3/8" x 22" LONG, 304SS
<b>PIN-0002</b>	3/8" x 28" LONG, 304SS
<b>PIN-0003</b>	3/8" x 34.5" LONG, 304SS
<b>PIN-0004</b>	3/8" x 32" LONG, 304SS
<b>PIN-0005</b>	3/8" x 38" LONG, 304SS
<b>PIN-0006</b>	3/8" x 30" LONG, 304SS
<b>PIN-0007</b>	1/2" x 32" LONG, 304SS

## U-Channel Bracket



Model Number	Dimensions
<b>GPT-00.1530-1</b>	1 1/2" x 30"
<b>GPT-00.230-1</b>	2" x 30"
<b>GPT-00.232-1</b>	2" x 32"
<b>GPT-00.238-1</b>	2" x 38"
<b>GPT-00.240-1</b>	2" x 40"

# FEED SYSTEM COMPONENTS

## FEED LINE HOLDER

**RBO-009** - 3" Feed line holder



## SINGLE BOOT UNLOADER

**BT-ADP-001** - Control unit adapter



**BT-S-T**  
BT-S transfer & slide gate kit for single unloader



**BT-S.04** - 12 GA 304SS Baffle



**BT-S-3**  
Single out unloader body for 3" auger (baffle not included, comes with door and wingnuts)



**BT-S-3CT**  
Single unloader for 3" auger designed for smaller bearing cap (baffle not included come with door and wingnuts)

**BT-S-3.5**  
Single out unloader for 3.5" auger (baffle not included, comes with door and wingnuts)

## 3" SINGLE BOOT UNLOADER KIT



**BT-S-3-KIT**  
Single unloader with anchor bearing, clamps, baffles & cannon balls

**BT-S-3-PKIT**  
Single unloader with pellet anchor bearing, clamps, baffles & cannon balls



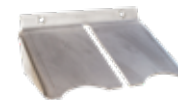
SDI understands that time is money. That is why we developed all 304 Stainless steel feed system components. With increased strength and longevity you won't have to worry about your feed systems wearing out prematurely.

## DOUBLE BOOT UNLOADER

**BT-D-T** - BT-D transfer & slide gate kit for double unloader



**BT-D.04** - 12 GA 304SS baffle



**BT-D-3**  
Double out unloader body for 3" auger (baffle not included, comes with doors and wingnuts)



**BT-D-3CT**  
Double out unloader for 3" auger designed for smaller bearing cap (baffle not included come with door and wingnuts)

## 3" DOUBLE BOOT UNLOADER KIT



**BT-D-3-KIT**  
Double unloader with anchor bearing, clamps, baffles & cannon balls

**BT-D-3-PKIT**  
Double unloader with pellet anchor bearing, clamps, baffles & cannon balls

## REPLACEMENT PARTS



**BT-3B** - 3" Anchor bearing



**BT-3.25C**  
3-1/4" Tube clamp



**BT-3CB**  
3" Cannon ball

# PRODUCT INDEX

Anchor Bolts	39	Feeder Parts	14	Pipe Straps	24
Boar Feeders	7	Feed Systems & Parts	14, 47	Pit Fan Transitions	25-26
Bolts, Nuts, Washers	35	Fencing	45-46	Plumbing	22
Boot Wash Grates	31	Finish Feeders	3, 12	Posts	45-46
Cast T-Bolts	36	Fittings	22	Poultry Netting	33
Chain	34	Flat Strap	44	S-Hooks	37
Chicken Wire	33	Flip Drinkers	18	Scale Frame	32
Corner Guards	30	Flooring Bolts	39	Sow Feeders	15-16
Couplers	22	Flooring Spanner Bars	39	Spinning J-Hooks	23
Coving	29	Flooring Straps	39, 44	Stalls	42
Crates	40-41	Footplates	45	Swing Waters	20
Curtain Brackets	27	Gating	45-46	T-Bolts	36
Curtain Pockets	27	Gate Plank Handles	45	Transitions	25-26
Door Bar	28	Gate Plank Shoes	45	Trim	29-30
Door Latches/Knobs	28	Gestation Stalls	42	Trough	43-44
Drains	31	Gestation Waterers	21	U-Bolts	37
Drinker Pipes	21	Hardware	35-39	Unloaders	47
Expansion Joint Covers	30	Hinges	28	V-Bolts	37
Farrowing Crates	40-41	Hose Hangers, Garden	31	Valves	22
Farrowing Waterers	21	J-Bolts	38	Water Cups	18-20
Feeders		Ladder	31	Water Pans	18-20
Boar/Gilt	7	Latches & Locks	28	Water Pipes/Fittings	22
Drop-Shelf	11	Nipples	22	Water Trough	20
Farrowing	15-16	Nipple Bars	17-18	Wean-to-Finish Feeders	4-6, 9-12
Finish	3, 12	Nursery Feeders	1-2, 8	Welded Wire Panel	33
Nursery	1-2, 8	Pipe Clamp Brackets	24	Wire (Inlet Wire)	34
Shut-Off	10	Pipe Hangers	23-24	Z-channels	30
Wean-to-Finish	4-6, 9-11				





Founded by a team with over 40 years of experience in the hog and manufacturing industry, SD Industries has grown to be a leading manufacturer of stainless steel hog equipment, with dealers across the US and internationally. Dedicated to providing superior products with precision engineering and rapid personal service, SDI maintains a commitment to the highest environmental, quality and production standards. The SDI brand stands for hog equipment with high quality, innovation, and user-friendly features.



**1.855.306.6354**  
42204 245th St.  
Alexandria, SD 57311  
**[sdimfg.com](http://sdimfg.com)**



Many of our products are available in other sizes and gauges not shown in this catalog. Contact your local dealer using our online dealer locator at: [sdimfg.com/dealer-locator](http://sdimfg.com/dealer-locator)