



# PVC INTERLOCKING LINER PANELS

*Wall and Ceiling Panels for Car/Truck Wash, Food Preparation, Cannabis and Agriculture applications*



Available in  
 12", 16", and 18" widths →

- Class A Fire and Smoke Rating
- FDA and CFIA Requirements Met
- Iodine Tested



*Standard Lengths:*

• 8' • 10' • 12' • 14' • 16' • 18' • 20'



**EZ PVC LLC**

3955 W. Mesa Vista Ave. Suite 8 Las Vegas NV 89118 USA

Tel: 702-205-9658 • Fax: 702-441-1828

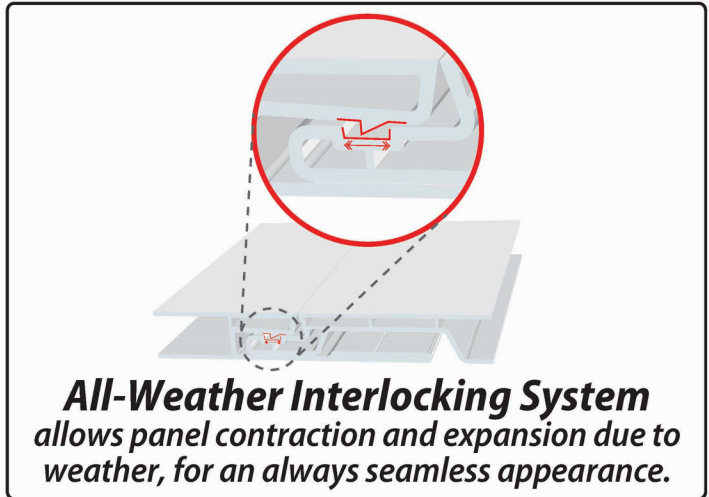
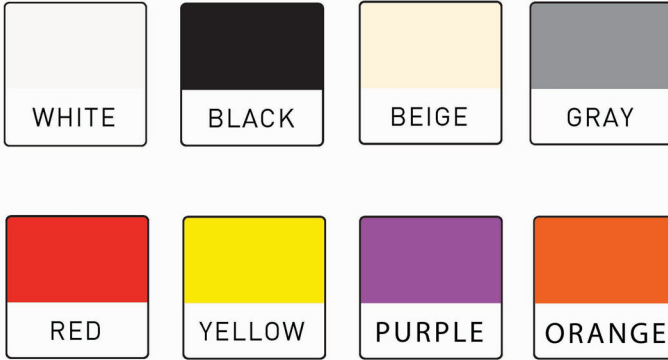
Email: Info@ezpvcna.com

[EZPVCNA.COM](http://EZPVCNA.COM)



# PVC INTERLOCKING LINER PANELS

## COLOR CHART

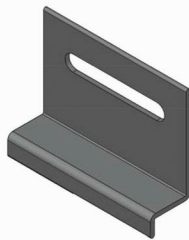


## TRIMS AND ACCESSORIES

Standard Lengths 12' and 16' • All trims are available in colors



EZ J TRIM



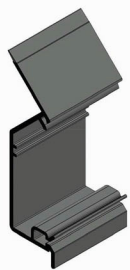
EZ DRIP TRIM



EZ MULTI H



EZ INSIDE CORNER COVE



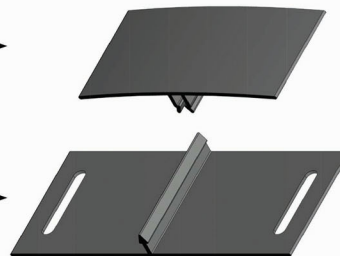
EZ CROWN  
BASE



EZ CROWN  
CAP

A  
(CAP)

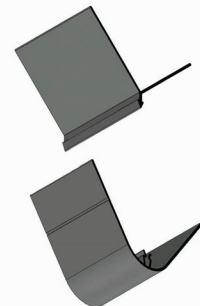
B  
(BASE)



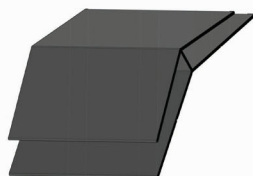
EZ 2PC H TRIM

A  
(MALE)

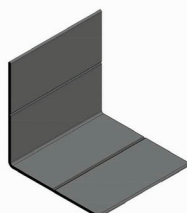
B  
(FEMALE)



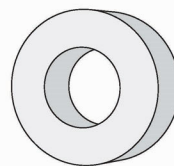
EZ 2PC MULTI CORNER



EZ 45 TRIM



EZ 90 TRIM



Plastic  
Spacer  
ø 3/8" x 1"



Hex Head  
Tapcon Screw  
ø 3/16" x 1-1/4"



#8 Square  
Stainless Steel  
Screw  
# 8 x 1-1/4"