

Enclosed Tubular Drag Cable and Disc Conveyors to Gently Convey Your Friable Materials

2000 Series - Maximum 75 Ft³/Hour 2" – 50mm



Based on 40 Lbs per Cubic Foot (640 Kg. per Cubic Meter)
Standard Speed

Cable Speed		Flow Rate			
Ft/Minute	Meter/Minute	Ft ³ /Hour	Lbs./Hour*	m ³ /Hour	Kg./Hour
40	12.19	30	1,200	.85	544
60	18.29	45	1,800	1.27	816
80	24.38	60	2,400	1.70	1,088
100	30.48	75	3,000	2.12	1,361

4000 Series - Maximum 525 Ft³/Hour 4" – 100mm



Based on 40 Lbs per Cubic Foot (640 Kg. per Cubic Meter)

Cable Speed		Flow Rate			
Ft/Minute	Meter/Minute	Ft ³ /Hour	Lbs./Hour*	m ³ /Hour	Kg./Hour
40	12.19	150	6,000	4.25	2,722
60	18.29	225	9,000	6.37	4,082
80	24.38	300	12,000	8.50	5,442
100	30.48	375	15,000	10.62	6,803
120	36.57	450	18,000	12.74	8,163
140	42.67	525	21,000	14.87	9,524

6000 Series - Maximum 1,240 Ft³/Hour 6" – 150mm



Based on 40 Lbs per Cubic Foot (640 Kg. per Cubic Meter)

Cable Speed		Flow Rate			
Ft/Minute	Meter/Minute	Ft ³ /Hour	Lbs./Hour*	m ³ /Hour	Kg./Hour
40	12	350	14,120	10	6,400
50	15	440	17,650	12	8,010
60	18	530	21,180	15	9,610
70	21	620	24,710	17	11,210
80	24	710	28,240	20	12,810
90	27	790	31,770	22	14,410
100	30	880	35,300	25	16,010
110	34	970	38,830	27	17,600
120	37	1,060	42,360	30	19,210
130	40	1,150	45,890	32	20,820
140	43	1,240	49,420	35	22,420

Energy Efficient

Electric Motor Operating Costs (Cablevey uses 1, 3 or 5 HP Drive Units)

Horsepower/ Kilowatts ¹	Full Load AMP	NEMA Efficiency	Annual Cost
(.75KW)	1.6	78.5	\$414
3 (2.23KW)	4.2	85.6	\$965
5 (3.72KW)	6.5	87.5	\$1,476

Based on 460V continuous run @ \$.10 per kilowatt hour



The Gentle Way to Convey

P O Box 148, 2397 Highway 23
Oskaloosa, Iowa 52577 U.S.A.

1 (800) 247-3344

Tel: +1 (641) 673-8451 • Fax: +1 (641) 673-7419

Email: info@cablevey.com

www.cablevey.com



Testimonial

Before going with Cablevey, we used buckets, pneumatics, belt-drive and vacuum-load systems, but they were not efficient. After reviewing different solutions, we chose Cablevey on price, installation, turn-around time and flexibility.

**"Bean Breakage decreased by 78%
This decision was a no-brainer!"**

Jean-François Vallee,
Engineering & Maintenance Manager
Van Houtte Inc. Montreal, Canada



Customized Tubular Drag Cable Conveyors Since 1971



- Energy-efficient
- Clean-in-Place Options
- Minimal Footprint
- Starts & Stops Under Load
- Gentle Handling – Less Breakage!
- Dust-Free Enclosed System – No Filters!
- Leader in Tubular Drag Conveying

Decades of Global Experience

World-Wide Experts in Cable & Disc Conveying Solutions

45

Years in Business

65

Countries Served

900

Products Moved

30,000

Installations



© Cablevey is a registered trademark of Intraco, Inc. 10/2018

Gentle Clean Reliable Conveying

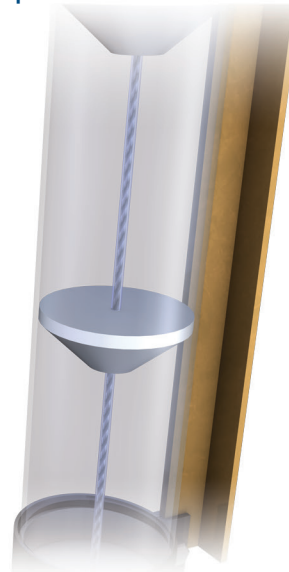
VARIOUS INLET TYPES

To Fit Your Application



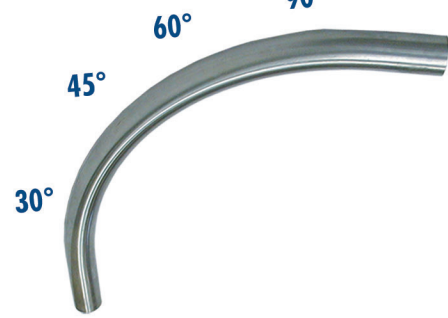
INSPECTION TUBE

Transparent View



DIRECTIONAL CHANGE

Sweep



INLINE BRUSH BOX

Automatic Disc & Cable Cleaning



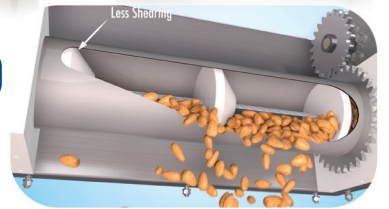
New
Side Access
Brush Box

ROTARY DISCHARGE

Multiple Discharge Options (as needed)

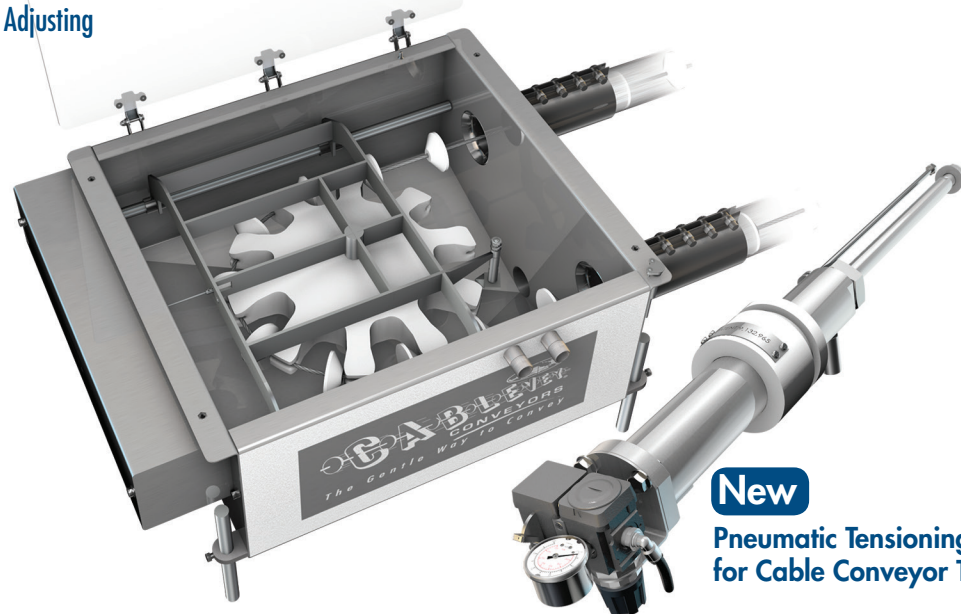


New
Variable Position
Discharge



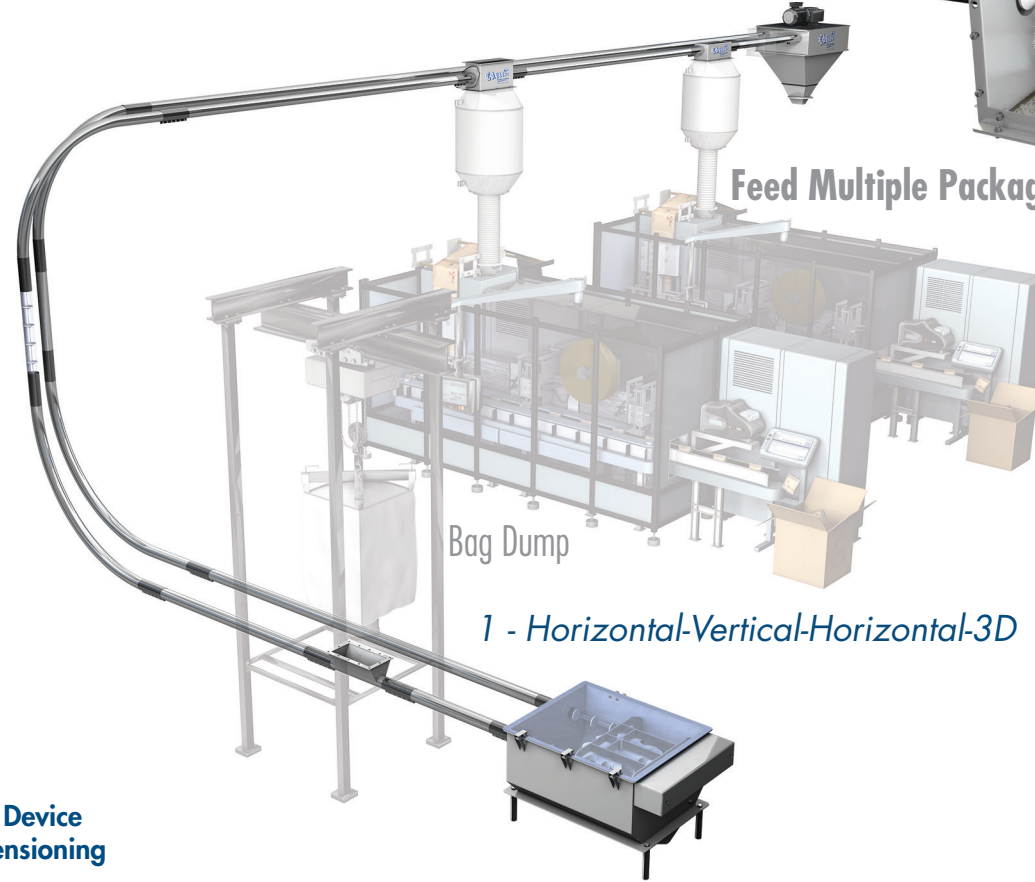
TENSION TURNAROUND UNIT

Self Adjusting



New
Pneumatic Tensioning Device
for Cable Conveyor Tensioning

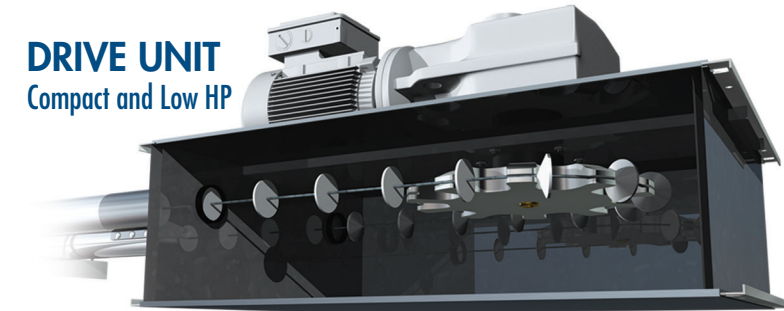
Feed Multiple Packaging Lines



Bag Dump

1 - Horizontal-Vertical-Horizontal-3D

DRIVE UNIT
Compact and Low HP

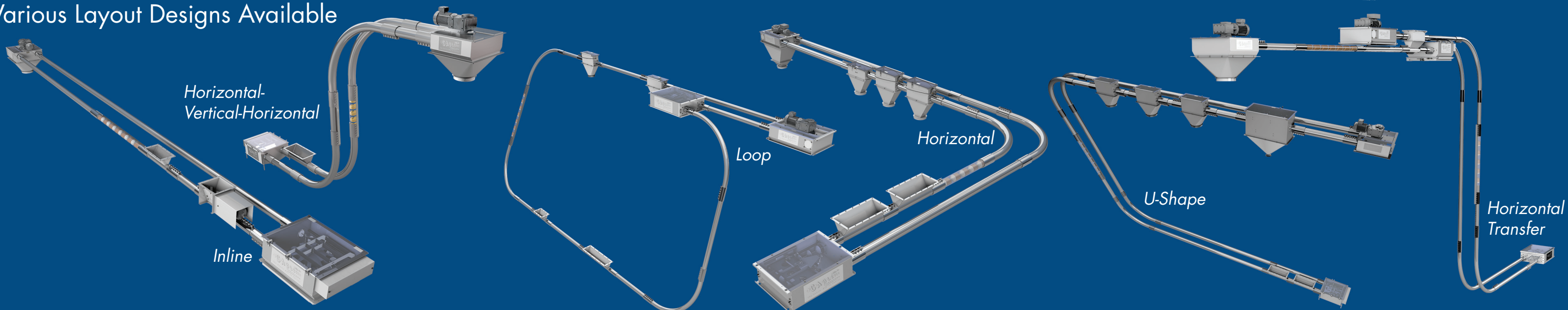


**THE HEART OF THE SYSTEM -
CABLE & DISCS**

1-Piece, 2-Piece, Coated or Uncoated • Ultra-Flexible
• High-Tensile Strength • Durable Stainless Steel Cable.



Various Layout Designs Available



Horizontal-
Vertical-Horizontal

Inline

Loop

Horizontal

U-Shape

Horizontal
Transfer

All Systems Customized to Your Specifications

Slow Speeds (VFD controlled) Fight Degradation and Separation!