

Camlocks

**PART "A"
MALE**



**PART "B"
FEMALE**



**PART "C"
FEMALE
(Hose Shank)**



**PART "DC"
DUST CAP**



**PART "D"
FEMALE**



**PART "E"
MALE
(Hose Shank)**



**PART "F"
MALE**

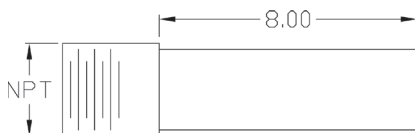


**PART "DP"
DUST PLUG**

Lorenz Aluminum Camlocks Sizes & Part Numbers - Stainless Steel Also Available

PART	PIPE SIZE (nominal)						
	1 1/2"	2"	2 1/2"	3"	4"	5"	6"
PART "A"	CL15A	CL2A	CL25A	CL3A	CL4A	CL5A	CL6A
PART "B"	CL15B	CL2B	CL25B	CL3B	CL4B	CL5B	CL6B
PART "C"	CL15C	CL2C	CL25C	CL3C	CL4C	CL5C	CL6C
PART "D"	CL15D	CL2D	CL25D	CL3D	CL4D	CL5D	CL6D
PART "E"	CL15E	CL2E	CL25E	CL3E	CL4E	CL5E	CL6E
PART "F"	CL15F	CL2F	CL25F	CL3F	CL4F	CL5F	CL6F
PART "DC"	CL15DC	CL2DC	CL25DC	CL3DC	CL4DC	CL5DC	CL6DC
PART "DP"	CL15DP	CL2DP	CL25DP	CL3DP	CL4DP	CL5DP	CL6DP

*MALE & FEMALE CAMLOCKS AVAILABLE WITH STUB TO COUPLE WITH TUBING SIZES



**Threaded Adapters
(Male & Female)**

Tube Stub Adapters

