

- Fully dimmable
- Patented spectral output for avian vision
- Advanced 14W system optimized for poultry
- Dim-to-Red® enhances flock productivity
- Durable, Built For Your Barn® design
- Improves animal welfare

*Product shown with recommended junction box
**Compatible with AgriShift® STC/STA Stringer



AgriShift® lighting systems "shift" spectrum and intensity, meeting the individual needs of your animals†.



Dim-to-Red® technology provides natural dawn and dusk simulation, reducing stress on your animals.



A Built For Your Barn® design uses techniques and materials that withstand harsh barn environments for years to come.

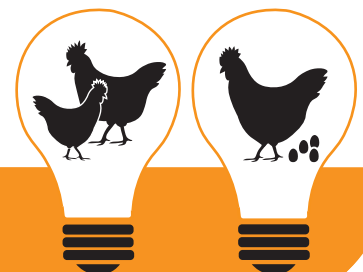
Animal-Centric Lighting Systems

The third generation AgriShift® MLL lighting fixture for broiler and turkey operations features a brighter, longer lasting and more rugged design that is less sensitive to power fluctuations. It is fully sealed against moisture and is made with species-specific, Dim-to-Red®, technology.

The AgriShift® MLL makes it easy to improve production and animal welfare by providing natural daylight simulation. The Dim-to-Red® technology used outputs a species-specific red spectrum shown to decrease time to peak production by stimulating ovulation via the release of reproduction stimulating hormones.

The Science Behind the Technology

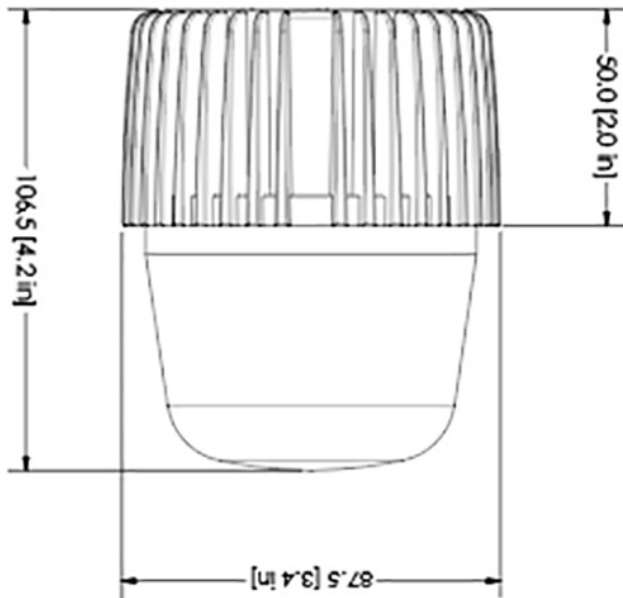
The AgriShift® MLL has a deep red saturated light output, with an added blue and green spectrum, benefiting the vision of your animal. The enhanced red spectrum is the only spectrum which stimulates a bird's hypothalamic and pineal oscillators, helping maintain circadian rhythms and promoting sexual maturity. It also stimulates the release of two reproduction regulating hormones essential for sexual maturation and daily egg production.



AgriShift® MLL Specifications

Nominal Power	14W (at full intensity)
Luminous Flux	908 lm human photopic (120V)
Input Voltage	120 VAC / 50/60 Hz, 230 VAC / 50/60 Hz
Beam Angle	180°
Light Output Equivalence	Up to 100W incandescent
Spectral Output	Species-specific red with blue enhanced white
Operating Temperature	-20°C to 40°C / -4°F to 104°F
Dimmable Range	100% to 5%, dims to red hue
Dimmer Type	Phase Modulation or Amplitude Control*
Environmental Ratings	Suitable for wet locations (JB, JJ, HW), ROHS Compliant, Suitable for Indoor Corrosive Environments, Tested to CAN/CSA C22.2 No. 94.2-07, CLAUSE 8.7
Safety	Conforms to UL Std. 1598 (HW, JB) Certified to CAN/CSA C22.2 No. 250.-08 (HW, JB) Conform to UL Std. 1993 (EB, JJ) Certified to CSA Std. C22.2 No. 1993 (EB, JJ)

Mechanical Dimensions



Ordering Information

AgriShift® MLL 120V

	SKU
Base Unit (BU)	MLL-FSWR-BU-180-014-120
Edison Base (EB)	MLL-FSWR-EB-180-014-120
Jelly Jar (JJ)	MLL-FSWR-JJ-180-014-120
<i>Includes JJ adaptor/connector kit</i>	
Junction Box (JB)	MLL-FSWR-JB-180-014-120
<i>Includes JB adaptor/connector kit</i>	
Hard Wire (HW)	MLL-FSWR-HW-180-014-120

AgriShift® MLL Accessories

	SKU
AgriShift® Master Controller 120V	30-014-00188-L123
AgriShift® Slave Dimmer 120V	30-014-00189-L123
AgriShift® Master Controller 240V-50Hz	30-014-00180-L123
AgriShift® Master Controller 240V-60Hz	30-014-00180-L123-60Hz
Junction Box	PRB57550GY
<i>Five 3/4" threaded outlets</i>	
Junction Box	PRB575GYKO
<i>Five total 3/4" KO hubs, four sealed</i>	
AgriShift® STC, Stringer Connector	STC-0183-10-080
<i>~24½ m OAL, 2.43 m sections</i>	
AgriShift® STC, Stringer Connector	STC-0184-10-100
<i>~30½ m OAL, 3 m sections</i>	
AgriShift® STA, Stringer Adaptor, 30 cm OAL	STA-0197-3-012
AgriShift® STA, Stringer Adaptor, 1 m OAL	STA-0189-3-039
AgriShift® STA, Stringer Adaptor, 2 m OAL	STA-0190-3-079
AgriShift® STA, Stringer Adaptor, 3 m OAL	STA-0191-3-118
Starter Cable, 4 ft OAL	STAR-0198-3-004
<i>Male connector on one end</i>	

* For optimum dimming performance use AgriShift® Controllers