



Base Unit Format



Junction Box Format

- Improves feed conversion
- Promotes early weight gain
- Low-profile, wide beam angle
- Advanced system specialized for poultry
- 14W LED equivalent to 100W incandescent
- Durable, Built For Your Barn® design
- Enhances animal welfare
- Patented spectral output†

\*Product shown with recommended junction box  
†Compatible with AgriShift® STC/STA Stringer



AgriShift® lighting systems “shift” spectrum and intensity, meeting the individual needs of your animals¹.



Dim-to-Blue® technology encourages uniform growth by offering healthy bird development during every growth stage.



A Built For Your Barn® design uses techniques and materials that withstand harsh barn environments for years to come.

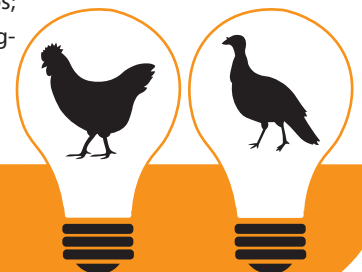
## Animal-Centric Lighting Systems

The third generation AgriShift® MLB lighting fixture for broiler and turkey operations features a brighter, longer lasting and more rugged design that is less sensitive to power fluctuations. It is fully sealed against moisture and is made with species-specific, Dim-to-Blue®, technology. It offers an optimized color spectrum and full dimming capability, allowing producers to enhance production by controlling photoperiod and light intensity throughout the entire life cycle of the bird.

With an AgriShift® Controller and a ONCE® recommended lighting program producers can improve bird weight, flock uniformity and feed conversion rates.

### The Science Behind the Technology

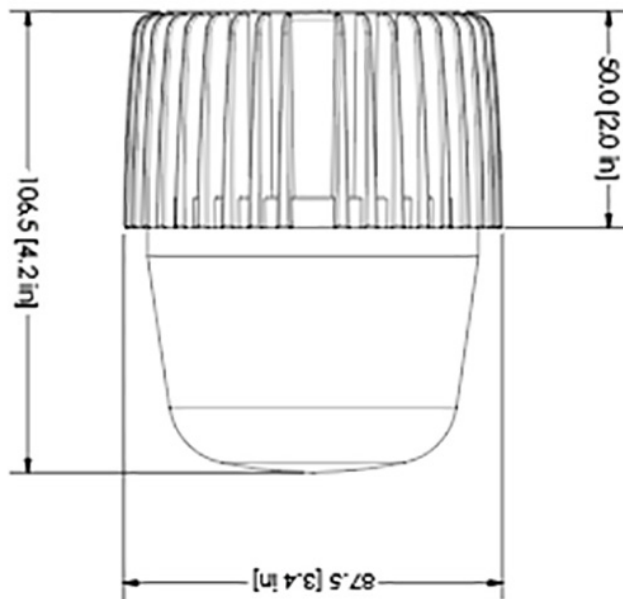
The AgriShift® MLB has an enhanced blue and green spectrum with added red content for early bird development. Green light has been shown to increase growth during the early stages, while blue light has been shown to elevate plasma androgens in poultry at later stages of development. Other studies show that blue light calms birds by reducing both corticosterone levels and heterophil:lymphocyte ratios; blood markers for short- and long-term stress.



## AgriShift® MLB Specifications

Nominal Power	14W (at full intensity)
Luminous Flux	1400 lm human photopic (120V)
Input Voltage	120 VAC / 50/60 Hz, 230 VAC / 50/60 Hz
Beam Angle	180°
Light Output Equivalence	Up to 100W incandescent
Spectral Output	Species-specific red with blue/green enhanced white
Operating Temperature	-20°C to 40°C / -4°F to 104°F
Dimmable Range	100% to 5%, dims to blue white moonlight
Dimmer Type	Phase Modulation or Amplitude Control*
Environmental Ratings	Suitable for wet locations (JB, JJ, HW), ROHS Compliant, Suitable for damp locations (EB), Suitable for Indoor Corrosive Environments per UL50E salt spray, Tested to CAN/CSA C22.2 NO. 94.2-07, CLAUSE 8.7 Conforms to UL 50e IP66 certified
Safety	ETL Listed, Conforms to UL std. 1598 (JB) Certified to CAN/CSA C 22.2 No. 250.-08 (JJ) Conforms to UL Std. 1993 (JJ) Certified to CSA Std. C 22.2 No. 1993 (JJ)

## Mechanical Dimensions



## Ordering Information

### AgriShift® MLB 120V

Base Unit (BU)	SKU MLB-FSWB-BU-180-014-120
Edison Base (EB)	MLB-FSWB-EB-180-014-120
Jelly Jar (JJ)	MLB-FSWB-JJ-180-014-120
<i>Includes JJ adaptor/connector kit</i>	
Junction Box (JB)	MLB-FSWB-JB-180-014-120
<i>Includes JB adaptor/connector kit</i>	
Hard Wire (HW)	MLB-FSWB-HW-180-014-120

### AgriShift® MLB 230V

Base Unit (BU)	SKU MLB-FSWB-BU-180-012-230
Edison Base (EB)	MLB-FSWB-EB-180-012-230
Jelly Jar (JJ)	MLB-FSWB-JJ-180-012-230
<i>Includes JJ adaptor/connector kit</i>	
Junction Box (JB)	MLB-FSWB-JB-180-012-230
<i>Includes JB adaptor/connector kit</i>	
Hard Wire (HW)	MLB-FSWB-HW-180-012-230

### AgriShift® MLB Accessories

AgriShift® Master Controller 120V	SKU 30-014-00188-L123
AgriShift® Slave Dimmer 120V	30-014-00189-L123
AgriShift® Master Controller 240V-50Hz	30-014-00180-L123
AgriShift® Master Controller 240V-60Hz	30-014-00180-L123-60Hz
Junction Box	PRB57550GY
<i>Five 3/4" threaded outlets</i>	
Junction Box	PRB575GYKO
<i>Five total 3/4" KO hubs, four sealed</i>	
AgriShift® STC, Stringer Connector ~24½ m OAL, 2.43 m sections	SKU STC-0183-10-080
AgriShift® STC, Stringer Connector ~30½ m OAL, 3 m sections	SKU STC-0184-10-100
AgriShift® STA, Stringer Adaptor, 30 cm OAL	SKU STA-0197-3-012
AgriShift® STA, Stringer Adaptor, 1 m OAL	SKU STA-0189-3-039
AgriShift® STA, Stringer Adaptor, 2 m OAL	SKU STA-0190-3-079
AgriShift® STA, Stringer Adaptor, 3 m OAL	SKU STA-0191-3-118
Starter Cable, 4 ft OAL	SKU STAR-0198-3-004
<i>Male connector on one end</i>	

*\*For optimum dimming performance use AgriShift® Controllers*